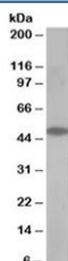


OSBPL1A Antibody (R36405)

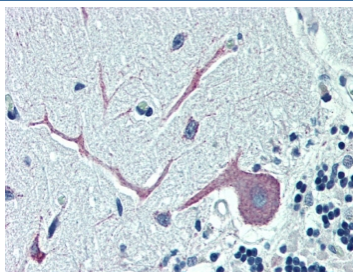
Catalog No.	Formulation	Size
R36405-100UG	0.5 mg/ml in 1X TBS, pH7.3, with 0.5% BSA (US sourced) and 0.02% sodium azide	100 ug

[Bulk quote request](#)

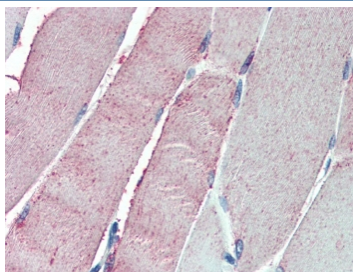
Availability	1-3 business days
Species Reactivity	Human
Predicted Reactivity	Mouse, Rat, Dog, Cow
Format	Antigen affinity purified
Clonality	Polyclonal (goat origin)
Isotype	Goat Ig
Purity	Antigen affinity
Gene ID	114876
Localization	Cytoplasmic, nuclear
Applications	Western Blot : 0.5-2ug/ml IHC (FFPE) : 5ug/ml ELISA (peptide) LOD : 1:16000
Limitations	This OSBPL1A antibody is available for research use only.



Western blot testing of human muscle lysate with OSBPL1A antibody at 0.5ug/ml.
Predicted/observed molecular weight: ~48 kDa.



IHC testing of FFPE human cerebellum tissue with OSBPL1A antibody at 5ug/ml.
Steamed antigen retrieval with citrate buffer pH 6, AP-staining.



IHC testing of FFPE human skeletal muscle tissue with OSBPL1A antibody at 5ug/ml.
Steamed antigen retrieval with citrate buffer pH 6, AP-staining.

Description

Additional name(s) for this target protein: Oxysterol binding protein-like 1A; ORP1; OSBP-related protein 1

Application Notes

Optimal dilution of the OSBPL1A antibody should be determined by the researcher.

Immunogen

Amino acids YWDRNYFNLDPDIY were used as the immunogen for this OSBPL1A antibody.

Storage

Aliquot and store the OSBPL1A antibody at -20oC.