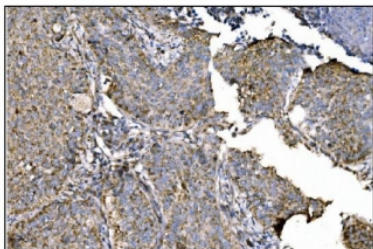


## Ornithine Aminotransferase Antibody / OAT (RQ6502)

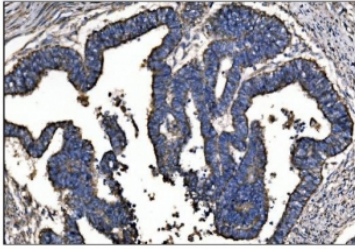
Catalog No.	Formulation	Size
RQ6502	0.5mg/ml if reconstituted with 0.2ml sterile DI water	100 ug

### Bulk quote request

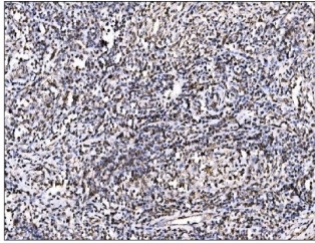
<b>Availability</b>	1-3 business days
<b>Species Reactivity</b>	Human, Mouse, Rat
<b>Format</b>	Antigen affinity purified
<b>Host</b>	Rabbit
<b>Clonality</b>	Polyclonal (rabbit origin)
<b>Isotype</b>	Rabbit IgG
<b>Purity</b>	Affinity purified
<b>Buffer</b>	Lyophilized from 1X PBS with 2% Trehalose
<b>UniProt</b>	P04181
<b>Localization</b>	Cytoplasmic
<b>Applications</b>	Western Blot : 1-2ug/ml Immunohistochemistry (FFPE) : 2-5ug/ml Flow Cytometry : 1-3ug/million cells Direct ELISA : 0.1-0.5ug/ml
<b>Limitations</b>	This Ornithine Aminotransferase antibody is available for research use only.



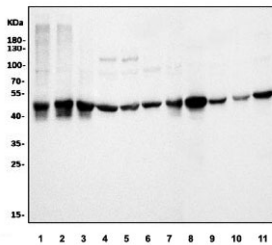
IHC staining of FFPE human lung cancer tissue with Ornithine Aminotransferase antibody. HIER: boil tissue sections in pH8 EDTA for 20 min and allow to cool before testing.



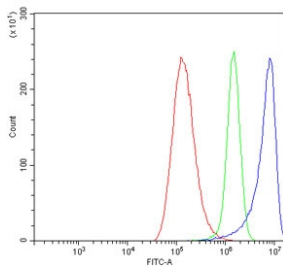
IHC staining of FFPE human rectal cancer tissue with Ornithine Aminotransferase antibody. HIER: boil tissue sections in pH8 EDTA for 20 min and allow to cool before testing.



IHC staining of FFPE human testicular cancer tissue with Ornithine Aminotransferase antibody. HIER: boil tissue sections in pH8 EDTA for 20 min and allow to cool before testing.



Western blot testing of human 1) K562, 2) A431, 3) HEK293, 4) Caco-2, 5) U-87 MG, 6) HepG2, 7) U-2 OS, 8) rat kidney, 9) rat testis, 10) mouse brain and 11) mouse kidney lysate with Ornithine Aminotransferase antibody. Predicted molecular weight ~49 kDa.



Flow cytometry testing of human A549 cells with Ornithine Aminotransferase antibody at 1ug/million cells (blocked with goat sera); Red=cells alone, Green=isotype control, Blue=Ornithine Aminotransferase antibody.

## Description

Ornithine aminotransferase (OAT) is an enzyme which is encoded in human by the OAT gene located on chromosome 10. This gene encodes the mitochondrial enzyme ornithine aminotransferase, which is a key enzyme in the pathway that converts arginine and ornithine into the major excitatory and inhibitory neurotransmitters glutamate and GABA. Mutations that result in a deficiency of this enzyme cause the autosomal recessive eye disease Gyrate Atrophy. Alternatively spliced transcript variants encoding different isoforms have been described. Related pseudogenes have been defined on the X chromosome.

## Application Notes

Optimal dilution of the Ornithine Aminotransferase antibody should be determined by the researcher.

## Immunogen

An E. coli-derived human protein (amino acids A214-F439) was used as the immunogen for the Ornithine Aminotransferase antibody.

## Storage

After reconstitution, the Ornithine Aminotransferase antibody can be stored for up to one month at 4oC. For long-term, aliquot and store at -20oC. Avoid repeated freezing and thawing.