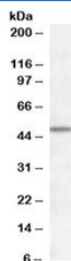


Orexin receptor 1/2 Antibody (R36388)

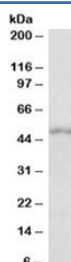
Catalog No.	Formulation	Size
R36388-100UG	0.5 mg/ml in 1X TBS, pH7.3, with 0.5% BSA (US sourced) and 0.02% sodium azide	100 ug

[Bulk quote request](#)

Availability	1-3 business days
Species Reactivity	Human, Mouse, Rat
Predicted Reactivity	Cow, Dog, Pig
Format	Antigen affinity purified
Host	Goat
Clonality	Polyclonal (goat origin)
Isotype	Goat Ig
Purity	Antigen affinity
Gene ID	3061; 3062
Applications	Western Blot : 0.3-1ug/ml ELISA (peptide) LOD : 1:32000
Limitations	This Orexin receptor 1/2 antibody is available for research use only.



Western blot testing of human frontal cortex lysate with Orexin receptor 1/2 antibody at 0.5ug/ml. Predicted molecular weight (human): ~48/51kDa (OX1R/OX2R).



Western blot of mouse brain lysate with Orexin receptor 1/2 antibody at 1ug/ml. Predicted molecular weight (human): ~48/51kDa (OX1R/OX2R).

Description

Additional name(s) for this target protein: Hypocretin (orexin) receptor 1; HCRTR1; OX1R; OX2R

Application Notes

Optimal dilution of the Orexin receptor 1/2 antibody should be determined by the researcher.

Immunogen

Amino acids YNFLSGKFREQFK were used as the immunogen for this Orexin receptor 1/2 antibody. This sequence is common to OX1R and OX2R.

Storage

Aliquot and store the Orexin receptor 1/2 antibody at -20oC.