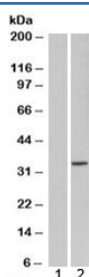


ORC6L Antibody (R33885)

Catalog No.	Formulation	Size
R33885-100UG	0.5 mg/ml in 1X TBS, pH7.3, with 0.5% BSA (US sourced) and 0.02% sodium azide	100 ug

[Bulk quote request](#)

Availability	1-3 business days
Species Reactivity	Human
Format	Antigen affinity purified
Clonality	Polyclonal (goat origin)
Isotype	Goat Ig
Purity	Antigen affinity
Gene ID	23594
Applications	Western Blot : 1-3ug/ml
Limitations	This ORC6L antibody is available for research use only.



Western blot testing of HEK293 lysate overexpressing ORC6L with ORC6L antibody [mock transfection in lane 1]. Predicted molecular weight: ~28kDa.

Description

Additional name(s) for this target protein: Origin recognition complex, subunit 6 homolog-like

Application Notes

Optimal dilution of the ORC6L antibody should be determined by the researcher.

Immunogen

Amino acids ENAASAQKATAE were used as the immunogen for this ORC6L antibody.

Storage

Aliquot and store the ORC6L antibody at -20oC.