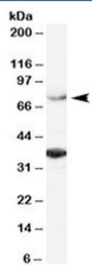


## ORC3L Antibody (R35338)

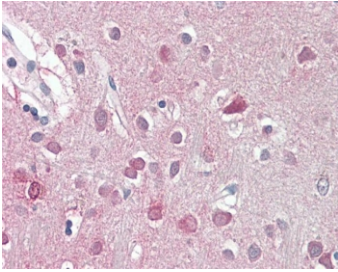
Catalog No.	Formulation	Size
R35338-100UG	0.5 mg/ml in 1X TBS, pH7.3, with 0.5% BSA (US sourced) and 0.02% sodium azide	100 ug

[Bulk quote request](#)

<b>Availability</b>	1-3 business days
<b>Species Reactivity</b>	Human
<b>Predicted Reactivity</b>	Mouse, Rat, Dog, Cow
<b>Format</b>	Antigen affinity purified
<b>Host</b>	Goat
<b>Clonality</b>	Polyclonal (goat origin)
<b>Isotype</b>	Goat Ig
<b>Purity</b>	Antigen affinity
<b>Gene ID</b>	23595
<b>Applications</b>	Western Blot : 1-3ug/ml IHC (FFPE) : 3-6ug/ml ELISA (peptide) LOD : 1:32000
<b>Limitations</b>	This ORC3L antibody is available for research use only.



Western blot testing of HeLa lysate with ORC3L antibody at 2ug/ml. The expected ~75 kDa band and the additional ~35 kDa band are both blocked by the immunizing peptide.



IHC testing of FFPE human brain cortex with ORC3L antibody at 3.75ug/ml. Required HIER: steamed antigen retrieval with pH6 citrate buffer; AP-staining.

## Description

Additional name(s) for this target protein: Origin recognition complex subunit 3-like

## Application Notes

Optimal dilution of the ORC3L antibody should be determined by the researcher.

## Immunogen

Amino acids QKTDHVARLTWGGC were used as the immunogen for this ORC3L antibody.

## Storage

Aliquot and store the ORC3L antibody at -20oC.