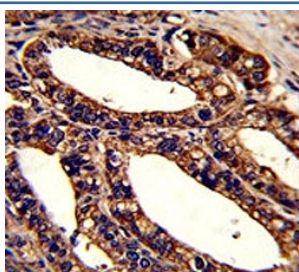


ORAI1 Antibody (F51678)

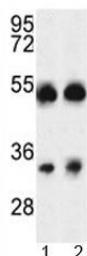
Catalog No.	Formulation	Size
F51678-0.4ML	In 1X PBS, pH 7.4, with 0.09% sodium azide	0.4 ml
F51678-0.08ML	In 1X PBS, pH 7.4, with 0.09% sodium azide	0.08 ml

[Bulk quote request](#)

Availability	1-3 business days
Species Reactivity	Human, Mouse
Predicted Reactivity	Chicken, Rat, Zebrafish
Format	Antigen affinity purified
Host	Rabbit
Clonality	Polyclonal (rabbit origin)
Isotype	Rabbit Ig
Purity	Antigen affinity
UniProt	Q96D31
Applications	IHC (Paraffin) : 1:50-1:100 Western Blot : 1:1000
Limitations	This ORAI1 antibody is available for research use only.



IHC analysis of FFPE human prostate carcinoma stained with ORAI1 antibody



Western blot analysis of ORAI1 antibody and A375 cell line and mouse testis tissue lysate. Predicted molecular weight ~33kDa/45~50kDa (unmodified/glycosylated)

Description

ORAI1/CRACM1 is a plasma membrane protein essential for store-operated calcium entry.

Application Notes

Titration of the ORAI1 antibody may be required due to differences in protocols and secondary/substrate sensitivity.

Immunogen

A portion of amino acids 145-173 from the human protein was used as the immunogen for this ORAI1 antibody.

Storage

Aliquot the ORAI1 antibody and store frozen at -20oC or colder. Avoid repeated freeze-thaw cycles.