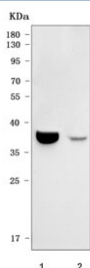


Opticin Antibody / OPTC (RQ7921)

Catalog No.	Formulation	Size
RQ7921	0.5mg/ml if reconstituted with 0.2ml sterile DI water	100 ug

Bulk quote request

Availability	1-3 business days
Species Reactivity	Human, Monkey
Format	Antigen affinity purified
Clonality	Polyclonal (rabbit origin)
Isotype	Rabbit IgG
Purity	Antigen affinity purified
Buffer	Lyophilized from 1X PBS with 2% Trehalose
UniProt	Q9UBM4
Applications	Western Blot : 0.5-1ug/ml Direct ELISA : 0.1-0.5ug/ml
Limitations	This Opticin antibody is available for research use only.



Western blot testing of 1) human ARPE-19 and 2) monkey RF/6A cell lysate with Opticin antibody. Predicted molecular weight ~37 kDa but may be observed at a higher molecular weight due to glycosylation.

Description

Opticin is a protein that in humans is encoded by the OPTC gene. Opticin belongs to class III of the small leucine-rich repeat protein (SLRP) family. Members of this family are typically associated with the extracellular matrix. Opticin is present in significant quantities in the vitreous of the eye and also localizes to the cornea, iris, ciliary body, optic nerve, choroid, retina, and fetal liver. Opticin may noncovalently bind collagen fibrils and regulate fibril morphology, spacing, and organization. The opticin gene is mapped to a region of chromosome 1 that is associated with the inherited eye diseases age-related macular degeneration (AMD) and posterior column ataxia with retinosa pigmentosa (AXPC1).

Application Notes

Optimal dilution of the Opticin antibody should be determined by the researcher.

Immunogen

E. coli-derived recombinant human protein (amino acids E32-Q250) was used as the immunogen for the Opticin antibody.

Storage

After reconstitution, the Opticin antibody can be stored for up to one month at 4°C. For long-term, aliquot and store at -20°C. Avoid repeated freezing and thawing.