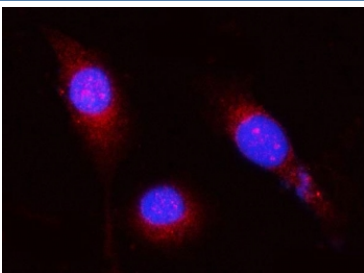


OPLAH Antibody / 5-oxo-L-prolinase / 5-OPase (RQ7944)

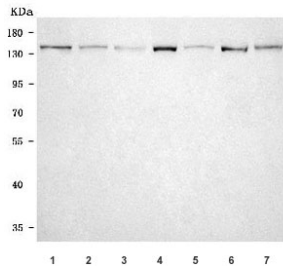
Catalog No.	Formulation	Size
RQ7944	0.5mg/ml if reconstituted with 0.2ml sterile DI water	100 ug

Bulk quote request

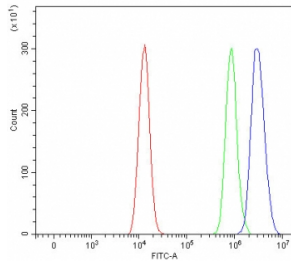
Availability	1-3 business days
Species Reactivity	Human, Mouse, Rat, Monkey
Format	Antigen affinity purified
Host	Rabbit
Clonality	Polyclonal (rabbit origin)
Isotype	Rabbit IgG
Purity	Antigen affinity purified
Buffer	Lyophilized from 1X PBS with 2% Trehalose
UniProt	O14841
Localization	Cytoplasmic
Applications	Western Blot : 0.5-1ug/ml Immunofluorescence (FFPE) : 5ug/ml Flow Cytometry : 1-3ug/million cells Direct ELISA : 0.1-0.5ug/ml
Limitations	This OPLAH antibody is available for research use only.



Immunofluorescent staining of FFPE human PC-3 cells with OPLAH antibody (red) and DAPI nuclear stain (blue). HIER: steam section in pH6 citrate buffer for 20 min.



Western blot testing of 1) human HepG2, 2) human T-47D, 3) monkey COS-7, 4) rat liver, 5) rat brain, 6) mouse liver and 7) mouse brain tissue lysate with OPLAH antibody. Predicted molecular weight ~137 kDa.



Flow cytometry testing of human HEL cells with OPLAH antibody at 1ug/million cells (blocked with goat sera); Red=cells alone, Green=isotype control, Blue= OPLAH antibody.

Description

The protein encoded by this gene acts as a homodimer, using ATP hydrolysis to catalyze the conversion of 5-oxo-L-proline to L-glutamate. Defects in this gene are a cause of 5-oxoprolinase deficiency (OPLAHD).

Application Notes

Optimal dilution of the OPLAH antibody should be determined by the researcher.

Immunogen

E. coli-derived recombinant human protein (amino acids H788-E1072) was used as the immunogen for the OPLAH antibody.

Storage

After reconstitution, the OPLAH antibody can be stored for up to one month at 4oC. For long-term, aliquot and store at -20oC. Avoid repeated freezing and thawing.