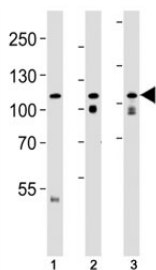


## OPA1 Antibody (F52666)

Catalog No.	Formulation	Size
F52666-0.4ML	In 1X PBS, pH 7.4, with 0.09% sodium azide	0.4 ml
F52666-0.08ML	In 1X PBS, pH 7.4, with 0.09% sodium azide	0.08 ml

[Bulk quote request](#)

<b>Availability</b>	1-3 business days
<b>Species Reactivity</b>	Human, Mouse, Rat
<b>Predicted Reactivity</b>	Chicken, Zebrafish
<b>Format</b>	Antigen affinity purified
<b>Host</b>	Rabbit
<b>Clonality</b>	Polyclonal (rabbit origin)
<b>Isotype</b>	Rabbit Ig
<b>Purity</b>	Antigen affinity
<b>UniProt</b>	O60313
<b>Applications</b>	Western Blot : 1:1000
<b>Limitations</b>	This OPA1 antibody is available for research use only.



Western blot analysis of lysate from (1) HeLa cell line, (2) mouse brain and (3) rat brain tissue lysate using OPA1 antibody at 1:1000.

## Description

Dynamin-related GTPase required for mitochondrial fusion and regulation of apoptosis. May form a diffusion barrier for proteins stored in mitochondrial cristae. Proteolytic processing in response to intrinsic apoptotic signals may lead to disassembly of OPA1 oligomers and release of the caspase activator cytochrome C (CYCS) into the mitochondrial intermembrane space.

## Application Notes

Titration of the OPA1 antibody may be required due to differences in protocols and secondary/substrate sensitivity.

## Immunogen

This OPA1 antibody was produced from a rabbit immunized with a KLH conjugated synthetic peptide between 895-929 amino acids from the C-terminal region of human OPA1, form S1.

## Storage

Aliquot the OPA1 antibody and store frozen at -20oC or colder. Avoid repeated freeze-thaw cycles.