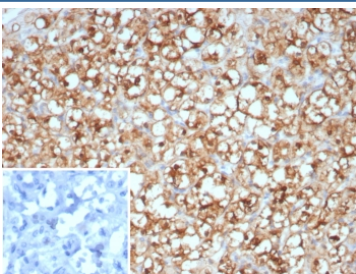


Op18 Antibody / Stathmin 1 / STMN1 [clone STMN1/8438] (V4690)

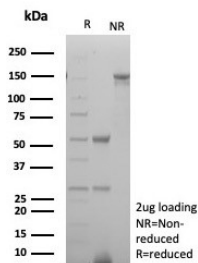
Catalog No.	Formulation	Size
V4690-100UG	0.2 mg/ml in 1X PBS with 0.1 mg/ml BSA (US sourced), 0.05% sodium azide	100 ug
V4690-20UG	0.2 mg/ml in 1X PBS with 0.1 mg/ml BSA (US sourced), 0.05% sodium azide	20 ug
V4690SAF-100UG	1 mg/ml in 1X PBS; BSA free, sodium azide free	100 ug

Bulk quote request

Availability	1-3 business days
Species Reactivity	Human
Format	Purified
Host	Mouse
Clonality	Monoclonal (mouse origin)
Isotype	Mouse IgG2b, kappa
Clone Name	STMN1/8438
Purity	Protein A/G affinity
UniProt	P16949
Localization	Cytoplasm
Applications	Immunohistochemistry (FFPE) : 1-2ug/ml for 30 min at RT
Limitations	This Op18 antibody is available for research use only.



IHC staining of FFPE human renal cell carcinoma tissue with Op18 antibody (clone STMN1/8438). Inset: PBS used in place of primary Ab (secondary Ab negative control).
 HIER: boil tissue sections in pH 9 10mM Tris with 1mM EDTA for 20 min and allow to cool before testing.



SDS-PAGE analysis of purified, BSA-free Op18 antibody (clone STMN1/8438) as confirmation of integrity and purity.

Description

Op18 (for oncoprotein 18, also designated stathmin, prosolin or metablastin) is a conserved, Tubulin-associated, intracellular phosphoprotein. Many different phosphorylated forms of Op18 are observed, and it is expressed as two different isoforms. Op18 is considered a critical regulator of microtubulin dynamics and is downregulated by p53. It serves as a transducing protein, via phosphorylation, for a variety of cell signaling pathways and is involved in both mitosis and differentiation. Op18 is present in many cancers, including breast carcinomas, and is highly expressed in acute leukemias of different subtypes.

Application Notes

Optimal dilution of the Op18 antibody should be determined by the researcher.

Immunogen

A recombinant fragment of human Stathmin 1 protein was used as the immunogen for the Op18 antibody.

Storage

Aliquot the Op18 antibody and store frozen at -20°C or colder. Avoid repeated freeze-thaw cycles.