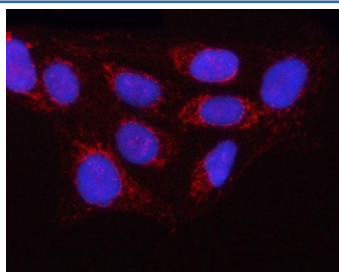


OLA1 Antibody / Obg-like ATPase 1 / GTPBP9 (RQ7894)

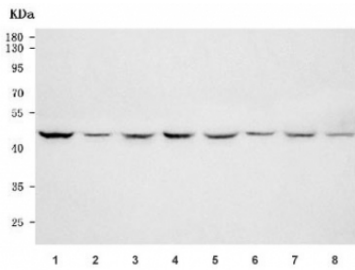
| Catalog No. | Formulation | Size |
|-------------|---|--------|
| RQ7894 | 0.5mg/ml if reconstituted with 0.2ml sterile DI water | 100 ug |

Bulk quote request

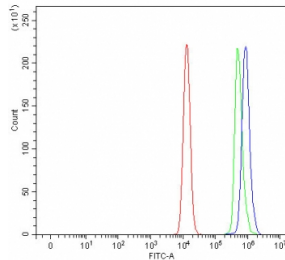
| | |
|---------------------------|--|
| Availability | 1-3 business days |
| Species Reactivity | Human, Mouse, Rat |
| Format | Antigen affinity purified |
| Clonality | Polyclonal (rabbit origin) |
| Isotype | Rabbit IgG |
| Purity | Antigen affinity purified |
| Buffer | Lyophilized from 1X PBS with 2% Trehalose |
| UniProt | Q9NTK5 |
| Localization | Cytoplasmic, nuclear |
| Applications | Western Blot : 0.5-1ug/ml Immunofluorescence (FFPE) : 5ug/ml Flow Cytometry : 1-3ug/million cells Direct ELISA : 0.1-0.5ug/ml |
| Limitations | This OLA1 antibody is available for research use only. |



Immunofluorescent staining of FFPE human U-2 OS cells with OLA1 antibody (red) and DAPI nuclear stain (blue). HIER: steam section in pH6 citrate buffer for 20 min.



Western blot testing of 1) human HepG2, 2) human Jurkat, 3) human MCF7, 4) human PC-3, 5) rat brain, 6) rat liver, 7) mouse brain and 8) mouse liver tissue lysate with OLA1 antibody. Predicted molecular weight ~45 kDa.



Flow cytometry testing of human Raji cells with OLA1 antibody at 1ug/million cells (blocked with goat sera); Red=cells alone, Green=isotype control, Blue= OLA1 antibody.

Description

Olg-like ATPase 1 is an enzyme that in humans is encoded by the OLA1 gene. This gene encodes a member of the GTPase protein family. The encoded protein interacts with breast cancer-associated gene 1 (BRCA1) and BRCA1-associated RING domain protein (BARD1), and is involved in centrosome regulation. Overexpression of this gene has been observed in multiple types of cancer and may be associated with poor survival. Pseudogenes of this gene have been defined on chromosomes 17 and 22.

Application Notes

Optimal dilution of the OLA1 antibody should be determined by the researcher.

Immunogen

E. coli-derived recombinant human protein (amino acids D8-D379) was used as the immunogen for the OLA1 antibody.

Storage

After reconstitution, the OLA1 antibody can be stored for up to one month at 4oC. For long-term, aliquot and store at -20oC. Avoid repeated freezing and thawing.