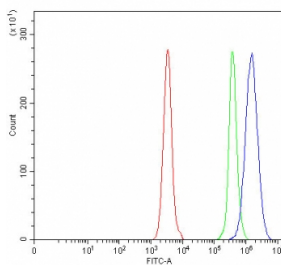


## OGDH Antibody / 2-oxoglutarate dehydrogenase (RQ7889)

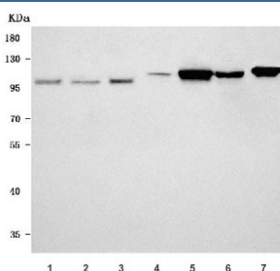
Catalog No.	Formulation	Size
RQ7889	0.5mg/ml if reconstituted with 0.2ml sterile DI water	100 ug

[Bulk quote request](#)

<b>Availability</b>	1-3 business days
<b>Species Reactivity</b>	Human, Mouse, Rat
<b>Format</b>	Antigen affinity purified
<b>Host</b>	Rabbit
<b>Clonality</b>	Polyclonal (rabbit origin)
<b>Isotype</b>	Rabbit IgG
<b>Purity</b>	Antigen affinity purified
<b>Buffer</b>	Lyophilized from 1X PBS with 2% Trehalose
<b>UniProt</b>	Q02218
<b>Applications</b>	Western Blot : 0.5-1ug/ml Flow Cytometry : 1-3ug/million cells Direct ELISA : 0.1-0.5ug/ml
<b>Limitations</b>	This OGDH antibody is available for research use only.



Flow cytometry testing of human Daudi cells with OGDH antibody at 1ug/million cells (blocked with goat sera); Red=cells alone, Green=isotype control, Blue= OGDH antibody.



Western blot testing of 1) human HeLa, 2) human HepG2, 3) human Daudi, 4) rat lung, 5) rat heart, 6) mouse lung and 7) mouse heart tissue lysate with OGDH antibody. Predicted molecular weight ~116 kDa.

## Description

Alpha-ketoglutarate dehydrogenase also known as 2-oxoglutarate dehydrogenase E1 component, mitochondrial is an enzyme that in humans is encoded by the OGDH gene. This gene encodes one subunit of the 2-oxoglutarate dehydrogenase complex. This complex catalyzes the overall conversion of 2-oxoglutarate (alpha-ketoglutarate) to succinyl-CoA and CO<sub>2</sub> during the Krebs cycle. The protein is located in the mitochondrial matrix and uses thiamine pyrophosphate as a cofactor. A congenital deficiency in 2-oxoglutarate dehydrogenase activity is believed to lead to hypotonia, metabolic acidosis, and hyperlactatemia. Alternative splicing results in multiple transcript variants encoding distinct isoforms.[]

## Application Notes

Optimal dilution of the OGDH antibody should be determined by the researcher.

## Immunogen

E. coli-derived recombinant human protein (amino acids M1-S1023) was used as the immunogen for the OGDH antibody.

## Storage

After reconstitution, the OGDH antibody can be stored for up to one month at 4°C. For long-term, aliquot and store at -20°C. Avoid repeated freezing and thawing.