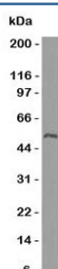


ODC Antibody [clone ORN255-1] (V7029)

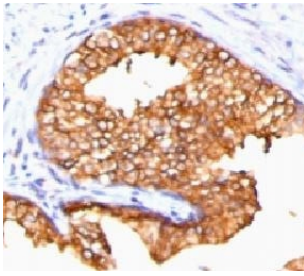
Catalog No.	Formulation	Size
V7029-100UG	0.2 mg/ml in 1X PBS with 0.1 mg/ml BSA (US sourced) and 0.05% sodium azide	100 ug
V7029-20UG	0.2 mg/ml in 1X PBS with 0.1 mg/ml BSA (US sourced) and 0.05% sodium azide	20 ug
V7029SAF-100UG	1 mg/ml in 1X PBS; BSA free, sodium azide free	100 ug
V7029IHC-7ML	Prediluted in 1X PBS with 0.1 mg/ml BSA (US sourced) and 0.05% sodium azide; *For IHC use only*	7 ml

[Bulk quote request](#)

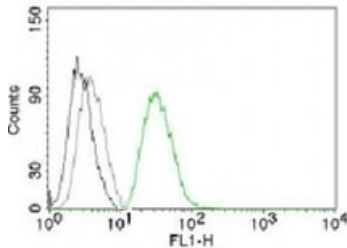
Species Reactivity	Human
Format	Purified
Host	Mouse
Clonality	Monoclonal (mouse origin)
Isotype	Mouse IgG1, kappa
Clone Name	ORN255-1
Purity	Protein G affinity chromatography
Gene ID	4953
Localization	Cytoplasmic
Applications	Flow Cytometry : 1-2ug/million cells Western Blot : 1-2ug/ml Immunohistochemistry (FFPE) : 0.5-1ug/ml for 30 min at RT Prediluted IHC Only Format : incubate for 30 min at RT (1)
Limitations	This ODC antibody is available for research use only.



Western blot testing of ODC antibody and placenta lysate. Predicted molecular weight ~51 kDa.



IHC testing of FFPE human prostate carcinoma and ODC antibody (clone ORN255-1).
Required HIER: boil tissue sections in pH 9 10mM Tris with 1mM EDTA for 10-20 min.



Flow analysis of permeablized PC3 cells using ODC antibody (green, clone ORN255-1) and isotype control (black).

Description

Ornithine Decarboxylase (ODC) is the rate-limiting enzyme of the polyamine biosynthesis pathway which catalyzes ornithine to putrescine. The activity level for the enzyme varies in response to growth-promoting stimuli and exhibits a high turnover rate in comparison to other mammalian proteins. Originally localized to both chromosomes 2 and 7, the gene encoding this enzyme has been determined to be located on 2p25, with a pseudogene located on 7q31-qter. Multiple alternatively spliced transcript variants encoding distinct isoforms have been identified. [RefSeq]

Application Notes

Titering of the ODC antibody may be required for optimal performance.

1. The prediluted format is supplied in a dropper bottle and is optimized for use in IHC. After epitope retrieval step (if required), drip mAb solution onto the tissue section and incubate at RT for 30 min.

Immunogen

Recombinant human protein was used as the immunogen for this ODC antibody.

Storage

Store the ODC antibody at 2-8°C (with azide) or aliquot and store at -20°C or colder (without azide).