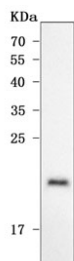


ODAPH Antibody / Odontogenesis associated phosphoprotein / C4orf26 (RQ7867)

Catalog No.	Formulation	Size
RQ7867	0.5mg/ml if reconstituted with 0.2ml sterile DI water	100 ug

[Bulk quote request](#)

Availability	1-3 business days
Species Reactivity	Human
Format	Antigen affinity purified
Host	Rabbit
Clonality	Polyclonal (rabbit origin)
Isotype	Rabbit IgG
Purity	Antigen affinity purified
Buffer	Lyophilized from 1X PBS with 2% Trehalose
UniProt	Q17RF5
Applications	Western Blot : 0.5-1ug/ml Direct ELISA : 0.1-0.5ug/ml
Limitations	This ODAPH antibody is available for research use only.



Western blot testing of human placental tissue lysate with ODAPH antibody. Predicted molecular weight ~16 kDa.

Description

Dental enamel forms the outer cap of teeth and is the hardest substance found in vertebrates. This gene is thought to encode an extracellular matrix acidic phosphoprotein that has a function in enamel mineralization during amelogenesis. Mutations in this gene are associated with recessive hypomineralized amelogenesis imperfecta.

Application Notes

Optimal dilution of the ODAPH antibody should be determined by the researcher.

Immunogen

E. coli-derived recombinant human protein (amino acids Q24-S130) was used as the immunogen for the ODAPH antibody.

Storage

After reconstitution, the ODAPH antibody can be stored for up to one month at 4oC. For long-term, aliquot and store at -20oC. Avoid repeated freezing and thawing.