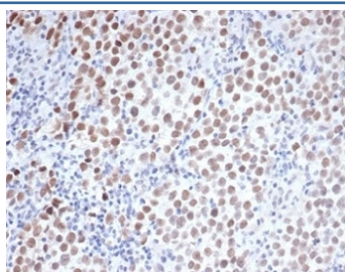


Oct4 Antibody / POU5F1 [clone Oct4/3508] (V9371)

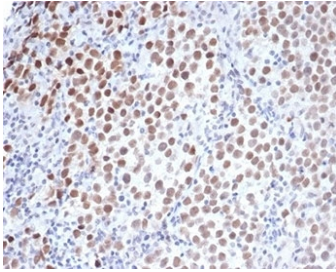
Catalog No.	Formulation	Size
V9371-100UG	0.2 mg/ml in 1X PBS with 0.1 mg/ml BSA (US sourced), 0.05% sodium azide	100 ug
V9371-20UG	0.2 mg/ml in 1X PBS with 0.1 mg/ml BSA (US sourced), 0.05% sodium azide	20 ug
V9371SAF-100UG	1 mg/ml in 1X PBS; BSA free, sodium azide free	100 ug

[Bulk quote request](#)

Availability	1-3 business days
Species Reactivity	Human
Format	Purified
Clonality	Monoclonal (mouse origin)
Isotype	Mouse IgG2b, kappa
Clone Name	Oct4/3508
Purity	Protein A/G affinity
UniProt	Q01860
Localization	Nucleus
Applications	Immunohistochemistry (FFPE) : 1-2ug/ml
Limitations	This Oct4 antibody is available for research use only.



IHC staining of FFPE human seminoma with Oct4 antibody (clone Oct4/3508). HIER: boil tissue sections in pH 9 10mM Tris with 1mM EDTA for 20 min and allow to cool before testing.



IHC staining of FFPE human seminoma with Oct4 antibody (clone Oct4/3508). HIER: boil tissue sections in pH 9 10mM Tris with 1mM EDTA for 20 min and allow to cool before testing.

Description

Oct4 Transcription factor that binds to the octamer motif (5). Forms a trimeric complex with SOX2 on DNA and controls the expression of a number of genes involved in embryonic development such as YES1, FGF4, UTF1 and ZFP206. Critical for early embryogenesis and for embryonic stem cell pluripotency. Interacts with UBE2I and ZSCAN10. Interacts with PKM2. Interacts with WWP2. Transcriptional activity is positively regulated by PKM2. Expressed in developing brain. Highest levels found in specific cell layers of the cortex, the olfactory bulb, the hippocampus and the cerebellum. Low levels of expression in adult tissues. Belongs to the POU transcription factor family. Class- 5 subfamily. 2 isoforms of the human protein are produced by alternative splicing.

Application Notes

Optimal dilution of the Oct4 antibody should be determined by the researcher.

Immunogen

A portion of amino acids 1-134 was used as the immunogen for the Oct4. antibody.

Storage

Aliquot the Oct4 antibody and store frozen at -20oC or colder. Avoid repeated freeze-thaw cycles.