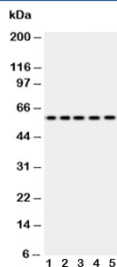


Occludin Antibody (R30159)

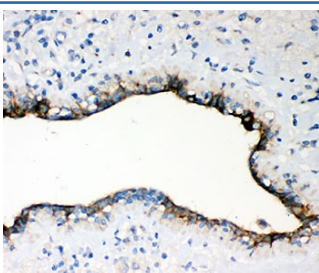
Catalog No.	Formulation	Size
R30159	0.5mg/ml if reconstituted with 0.2ml sterile DI water	100 ug

[Bulk quote request](#)

Availability	1-3 business days
Species Reactivity	Human
Format	Antigen affinity purified
Host	Rabbit
Clonality	Polyclonal (rabbit origin)
Isotype	Rabbit IgG
Purity	Antigen affinity
Buffer	Lyophilized from 1X PBS with 2.5% BSA and 0.025% sodium azide
UniProt	Q16625
Applications	Western Blot : 0.5-1ug/ml IHC (FFPE) : 0.5-1ug/ml
Limitations	This Occludin antibody is available for research use only.



Western blot testing of Occludin antibody and Lane 1: SW620; 2: COLO320; 3: A549; 4: 293T; 5: U87. Predicted molecular weight ~59 kDa.



IHC-P: Occludin antibody testing of human breast cancer tissue

Description

Occludin is an integral membrane protein that is located at tight junctions. It is a member of a family of proteins containing the highly conserved Marvel domain, which contains 4 transmembrane-helix regions. This gene is mapped to 5q13.2. Occludin regulates TGF-beta receptor type I localization for efficient TGF-beta-dependent dissolution of tight junctions during epithelial-mesenchymal transitions. It is an essential hepatitis C virus (HCV) cell entry factor that is able to render murine cells infectable with HCV glycoproteins. It has been found that Occludin is involved in cell migration and functions to recruit active PI3 kinase to the leading edge, resulting in RAC1 activation and formation of lamellipodia.

Application Notes

The stated application concentrations are suggested starting points. Titration of the Occludin antibody may be required due to differences in protocols and secondary/substrate sensitivity.

Immunogen

Human partial recombinant protein (AA 373-522) was used as the immunogen for this Occludin antibody.

Storage

After reconstitution, the Occludin antibody can be stored for up to one month at 4oC. For long-term, aliquot and store at -20oC. Avoid repeated freezing and thawing.