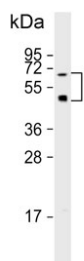


OASIS Antibody / CREB3L1 (F54862)

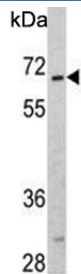
Catalog No.	Formulation	Size
F54862-0.4ML	In 1X PBS, pH 7.4, with 0.09% sodium azide	0.4 ml
F54862-0.08ML	In 1X PBS, pH 7.4, with 0.09% sodium azide	0.08 ml

[Bulk quote request](#)

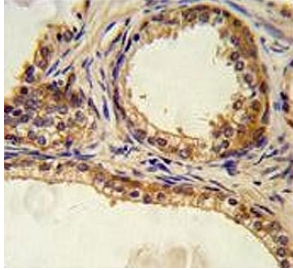
Availability	1-3 business days
Species Reactivity	Human, Mouse
Format	Purified
Host	Rabbit
Clonality	Polyclonal (rabbit origin)
Isotype	Rabbit Ig
Purity	Purified
UniProt	Q96BA8
Localization	Cytoplasmic, nuclear
Applications	Immunohistochemistry (FFPE) : 1:50-1:100 Flow Cytometry : 1:10-1:50 (1x10e6 cells) Western Blot : 1:2000-1:8000
Limitations	This OASIS antibody is available for research use only.



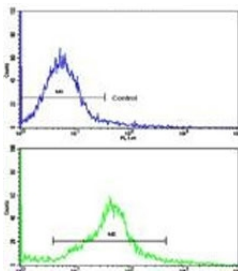
Western blot testing of human HepG2 cell lysate with OASIS antibody. Predicted molecular weight ~57 kDa. The ~47 kDa isoform may also be visualized.



Western blot testing of mouse stomach tissue lysate with OASIS antibody. Predicted molecular weight ~57 kDa. The ~47 kDa isoform may also be visualized.



IHC testing of FFPE human prostate carcinoma tissue with OASIS antibody. HIER: steam section in pH6 citrate buffer for 20 min and allow to cool prior to staining.



Flow cytometry testing of human HeLa cells with OASIS antibody; Blue=isotype control, Green= OASIS antibody.

Description

CREB3L1 is a transcription factor that acts during endoplasmic reticulum stress by activating unfolded protein response target genes. It is specifically involved in ER-stress response in astrocytes in the central nervous system (By similarity). It may play a role in gliosis. In vitro, it binds to box-B element, cAMP response element (CRE) and CRE-like sequences, and activates transcription through box-B element but not through CRE.

Application Notes

The stated application concentrations are suggested starting points. Titration of the OASIS antibody may be required due to differences in protocols and secondary/substrate sensitivity.

Immunogen

A portion of amino acids 481-509 from the human protein was used as the immunogen for the OASIS antibody.

Storage

Aliquot the OASIS antibody and store frozen at -20°C or colder. Avoid repeated freeze-thaw cycles.

