

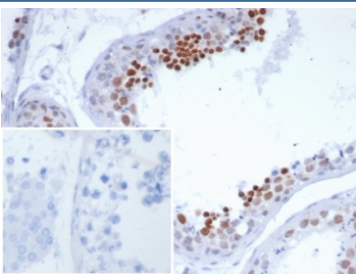
## NUTM1 Antibody / NUT family member 1 [clone SNUPN/7351R] (V4392)

Catalog No.	Formulation	Size
V4392-100UG	0.2 mg/ml in 1X PBS with 0.1 mg/ml BSA (US sourced), 0.05% sodium azide	100 ug
V4392-20UG	0.2 mg/ml in 1X PBS with 0.1 mg/ml BSA (US sourced), 0.05% sodium azide	20 ug
V4392SAF-100UG	1 mg/ml in 1X PBS; BSA free, sodium azide free	100 ug

Recombinant **RABBIT MONOCLONAL**

[Bulk quote request](#)

<b>Availability</b>	1-3 business days
<b>Species Reactivity</b>	Human
<b>Format</b>	Purified
<b>Host</b>	Rabbit
<b>Clonality</b>	Recombinant Rabbit Monoclonal
<b>Isotype</b>	Rabbit IgG, kappa
<b>Clone Name</b>	SNUPN/7351R
<b>Purity</b>	Protein A/G affinity
<b>UniProt</b>	Q86Y26
<b>Localization</b>	Nucleus, Cytoplasm
<b>Applications</b>	Immunohistochemistry (FFPE) : 1-2ug/ml for 30 minutes at RT
<b>Limitations</b>	This NUTM1 antibody is available for research use only.



IHC staining of FFPE human testis tissue with NUTM1 antibody (clone SNUPN/7351R). Inset: PBS used in place of primary Ab (secondary Ab negative control). HIER: boil tissue sections in pH 9 10mM Tris with 1mM EDTA for 20 min and allow to cool before testing.

### Description

NUTM1 (NUT Midline Carcinoma Family Member 1) is a Protein Coding gene. Diseases associated with NUTM1 include Nut Midline Carcinoma and Spindle Cell Sarcoma. Among its related pathways are Chromatin Regulation / Acetylation.

An important paralog of this gene is NUTM2G. Plays a role in the regulation of proliferation. Regulates TERT expression by modulating SP1 binding to TERT promoter binding sites.

## **Application Notes**

Optimal dilution of the NUTM1 antibody should be determined by the researcher.

## **Immunogen**

A recombinant partial protein sequence (within amino acids 900-1100) from the human protein was used as the immunogen for the NUTM1 antibody.

## **Storage**

Aliquot the NUTM1 antibody and store frozen at -20oC or colder. Avoid repeated freeze-thaw cycles.