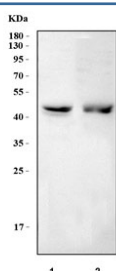


NUF2 Antibody / Kinetochore protein Nuf2 (RQ8308)

Catalog No.	Formulation	Size
RQ8308	0.5mg/ml if reconstituted with 0.2ml sterile DI water	100 ug

Bulk quote request

Availability	1-3 business days
Species Reactivity	Human
Format	Antigen affinity purified
Host	Rabbit
Clonality	Polyclonal (rabbit origin)
Isotype	Rabbit IgG
Purity	Antigen affinity purified
Buffer	Lyophilized from 1X PBS with 2% Trehalose
UniProt	Q9BZD4
Applications	Western Blot : 0.5-1ug/ml Direct ELISA : 0.1-0.5ug/ml
Limitations	This NUF2 antibody is available for research use only.



Western blot testing of human 1) A431 and 2) U251 cell lysate with NUF2 antibody.
Predicted molecular weight ~54 kDa.

Description

Kinetochore protein Nuf2 is a protein that in humans is encoded by the NUF2 gene. This gene encodes a protein that is highly similar to yeast Nuf2, a component of a conserved protein complex associated with the centromere. Yeast Nuf2 disappears from the centromere during meiotic prophase when centromeres lose their connection to the spindle pole body, and plays a regulatory role in chromosome segregation. The encoded protein is found to be associated with centromeres of mitotic HeLa cells, which suggests that this protein is a functional homolog of yeast Nuf2. Alternatively spliced transcript variants that encode the same protein have been described.

Application Notes

Optimal dilution of the NUF2 antibody should be determined by the researcher.

Immunogen

An E.coli-derived human recombinant protein (M1-Q297) was used as the immunogen for the NUF2 antibody.

Storage

After reconstitution, the NUF2 antibody can be stored for up to one month at 4oC. For long-term, aliquot and store at -20oC. Avoid repeated freezing and thawing.