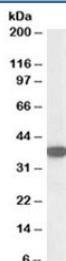


Nucleophosmin Antibody (R35232)

Catalog No.	Formulation	Size
R35232-100UG	0.5 mg/ml in 1X TBS, pH7.3, with 0.5% BSA (US sourced) and 0.02% sodium azide	100 ug

[Bulk quote request](#)

Availability	1-3 business days
Species Reactivity	Human
Predicted Reactivity	Cow, Dog, Mouse, Rat
Format	Antigen affinity purified
Host	Goat
Clonality	Polyclonal (goat origin)
Isotype	Goat Ig
Purity	Antigen affinity
Gene ID	4869
Applications	Western Blot : 0.03-0.1ug/ml ELISA (peptide) LOD : 1:8000
Limitations	This Nucleophosmin antibody is available for research use only.



Western blot testing of Jurkat lysate with Nucleophosmin antibody at 0.1ug/ml.
Expected/observed molecular weight: ~38kDa.

Description

Additional name(s) for this target protein: NPM, NPM1, Numatrin, Nucleolar phosphoprotein B23; NPM1

Application Notes

Optimal dilution of the Nucleophosmin antibody should be determined by the researcher.

Immunogen

Amino acids QEAIQDLWQWRKSL were used as the immunogen for this Nucleophosmin antibody.

Storage

Aliquot and store the Nucleophosmin antibody at -20oC.