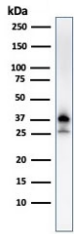


Nucleophosmin Antibody / NPM1 [clone NPM1/3287] (V7550)

Catalog No.	Formulation	Size
V7550-100UG	0.2 mg/ml in 1X PBS with 0.1 mg/ml BSA (US sourced) and 0.05% sodium azide	100 ug
V7550-20UG	0.2 mg/ml in 1X PBS with 0.1 mg/ml BSA (US sourced) and 0.05% sodium azide	20 ug
V7550SAF-100UG	1 mg/ml in 1X PBS; BSA free, sodium azide free	100 ug
V7550IHC-7ML	Prediluted in 1X PBS with 0.1 mg/ml BSA (US sourced) and 0.05% sodium azide; *For IHC use only*	7 ml

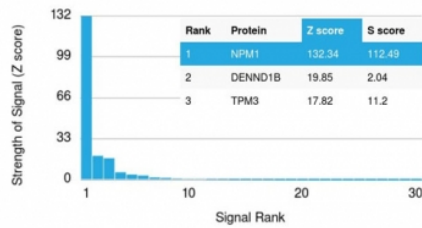
[Bulk quote request](#)

Availability	1-3 business days
Species Reactivity	Human
Format	Purified
Host	Mouse
Clonality	Monoclonal (mouse origin)
Isotype	Mouse IgG2b, kappa
Clone Name	NPM1/3287
Purity	Protein G affinity chromatography
UniProt	P06748
Localization	Nuclear, cytoplasmic
Applications	ELISA : 2-4ug/ml (order BSA/azide-free format) Immunohistochemistry (FFPE) : 1-2ug/ml for 30 min at RT Western Blot : 1-2ug/ml Immunofluorescence : 1-2ug/ml Flow Cytometry : 1-2ug/ml
Limitations	This Nucleophosmin antibody is available for research use only.



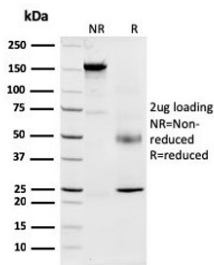
Western blot testing of human K562 cell lysate with Nucleophosmin antibody (clone NPM1/3287). Expected molecular weight: ~38 kDa.

Human Protein Microarray Specificity Validation

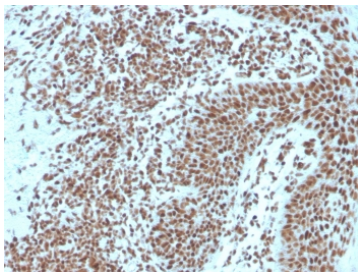


Analysis of HuProt(TM) microarray containing more than 19,000 full-length human proteins using Nucleophosmin antibody (clone NPM1/3287). These results demonstrate the foremost specificity of the NPM1/3287 mAb.

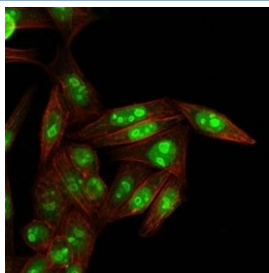
Z- and S- score: The Z-score represents the strength of a signal that an antibody (in combination with a fluorescently-tagged anti-IgG secondary Ab) produces when binding to a particular protein on the HuProt(TM) array. Z-scores are described in units of standard deviations (SD's) above the mean value of all signals generated on that array. If the targets on the HuProt(TM) are arranged in descending order of the Z-score, the S-score is the difference (also in units of SD's) between the Z-scores. The S-score therefore represents the relative target specificity of an Ab to its intended target.



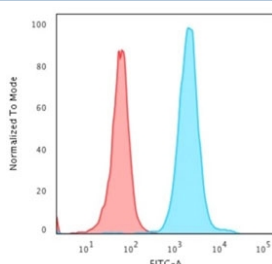
SDS-PAGE analysis of purified, BSA-free Nucleophosmin antibody (clone NPM1/3287) as confirmation of integrity and purity.



IHC staining of FFPE human basal cell carcinoma with Nucleophosmin antibody. HIER: boil tissue sections in pH6, 10mM citrate buffer, for 10-20 min and allow to cool before testing.



Immunofluorescent staining of human HeLa cells with Nucleophosmin antibody (clone NPM1/3287, green) and phalloidin (red).



Flow cytometry staining of PFA-fixed human HeLa cells with Nucleophosmin antibody; Red=isotype control, Blue= Nucleophosmin antibody.

Description

Recognizes a 33-38kDa glycoprotein, identified as Nucleophosmin (NPM). It is predominantly localized in the nucleus of cells in most tissues. NPM is involved in ribosomal assembly and rRNA transport. It is an abundant protein that is highly phosphorylated by Cdc2 kinase during mitosis. This phosphoprotein moves between the nucleus and the cytoplasm. It is thought to be involved in several processes including regulation of the ARF/p53 pathway. A number of genes are fusion partners, in particular the anaplastic lymphoma kinase gene on chromosome 2. Mutations in exon 12 affecting the C-terminus of the protein are associated with an aberrant cytoplasmic location. Mutations in this gene are associated with acute myeloid leukemia. The antibody may be a useful aid for classification of acute myeloid leukemia.

Application Notes

Optimal dilution of the Nucleophosmin antibody should be determined by the researcher.

1. The prediluted format is supplied in a dropper bottle and is optimized for use in IHC. After epitope retrieval step (if required), drip mAb solution onto the tissue section and incubate at RT for 30 min.

Immunogen

A portion of amino acids 185-287 from the human protein was used as the immunogen for the Nucleophosmin antibody.

Storage

Store the Nucleophosmin antibody at 2-8oC (with azide) or aliquot and store at -20oC or colder (without azide).