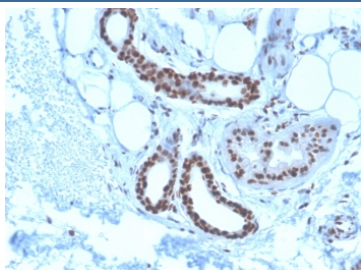


Nucleophosmin Antibody / NPM1 [clone NPM1/3285] (V7551)

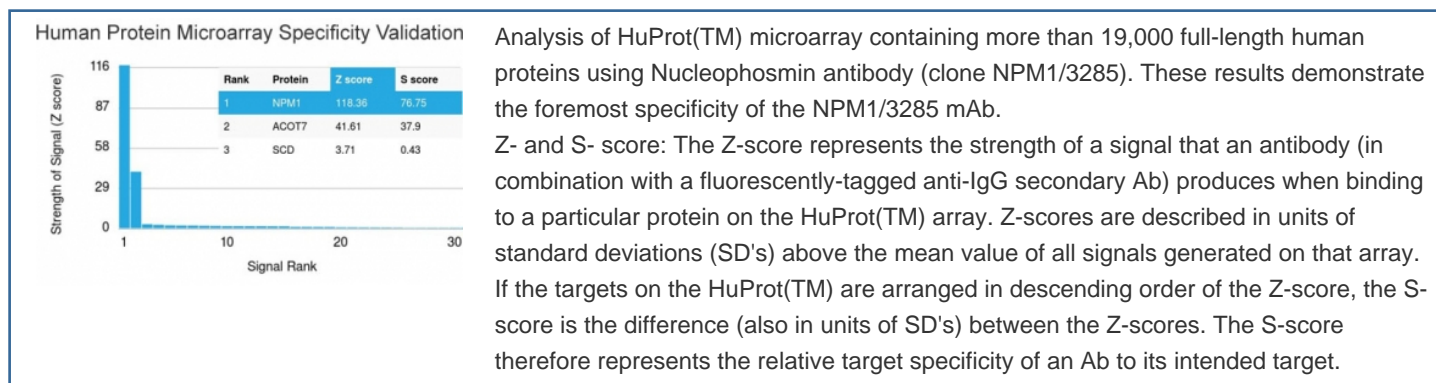
Catalog No.	Formulation	Size
V7551-100UG	0.2 mg/ml in 1X PBS with 0.1 mg/ml BSA (US sourced) and 0.05% sodium azide	100 ug
V7551-20UG	0.2 mg/ml in 1X PBS with 0.1 mg/ml BSA (US sourced) and 0.05% sodium azide	20 ug
V7551SAF-100UG	1 mg/ml in 1X PBS; BSA free, sodium azide free	100 ug
V7551IHC-7ML	Prediluted in 1X PBS with 0.1 mg/ml BSA (US sourced) and 0.05% sodium azide; *For IHC use only*	7 ml

[Bulk quote request](#)

Availability	1-3 business days
Species Reactivity	Human
Format	Purified
Host	Mouse
Clonality	Monoclonal (mouse origin)
Isotype	Mouse IgG2c, kappa
Clone Name	NPM1/3285
Purity	Protein G affinity chromatography
UniProt	P06748
Localization	Nuclear, cytoplasmic
Applications	Immunofluorescence : 1-2ug/ml ELISA : 2-4ug/ml (order BSA/azide-free format) Immunohistochemistry (FFPE) : 1-2ug/ml for 30 min at RT
Limitations	This Nucleophosmin antibody is available for research use only.



IHC staining of FFPE human basal cell carcinoma with Nucleophosmin antibody (clone NPM1/3285). HIER: boil tissue sections in pH6, 10mM citrate buffer, for 10-20 min and allow to cool before testing.



Description

Recognizes a 33kDa glycoprotein, identified as Nucleophosmin (NPM). It is predominantly localized in the nucleus of cells in most tissues. NPM is involved in ribosomal assembly and rRNA transport. It is an abundant protein that is highly phosphorylated by Cdc2 kinase during mitosis. This phosphoprotein moves between the nucleus and the cytoplasm. It is thought to be involved in several processes including regulation of the ARF/p53 pathway. A number of genes are fusion partners, in particular the anaplastic lymphoma kinase gene on chromosome 2. Mutations in exon 12 affecting the C-terminus of the protein are associated with an aberrant cytoplasmic location. Mutations in this gene are associated with acute myeloid leukemia. The antibody may be a useful aid for classification of acute myeloid leukemia.

Application Notes

Optimal dilution of the Nucleophosmin antibody should be determined by the researcher.

1. The prediluted format is supplied in a dropper bottle and is optimized for use in IHC. After epitope retrieval step (if required), drip mAb solution onto the tissue section and incubate at RT for 30 min.

Immunogen

A portion of amino acids 185-287 from the human protein was used as the immunogen for the Nucleophosmin antibody.

Storage

Store the Nucleophosmin antibody at 2-8oC (with azide) or aliquot and store at -20oC or colder (without azide).