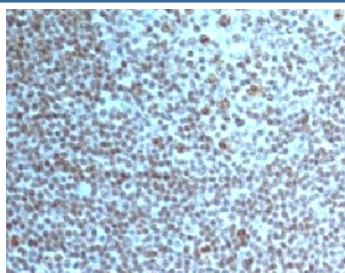


Nucleoli Marker Antibody [clone NCM102-1] (V7035)

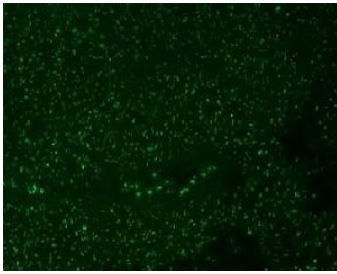
Catalog No.	Formulation	Size
V7035-100UG	0.2 mg/ml in 1X PBS with 0.1 mg/ml BSA (US sourced) and 0.05% sodium azide	100 ug
V7035-20UG	0.2 mg/ml in 1X PBS with 0.1 mg/ml BSA (US sourced) and 0.05% sodium azide	20 ug
V7035SAF-100UG	1 mg/ml in 1X PBS; BSA free, sodium azide free	100 ug
V7035IHC-7ML	Prediluted in 1X PBS with 0.1 mg/ml BSA (US sourced) and 0.05% sodium azide; *For IHC use only*	7 ml

[Bulk quote request](#)

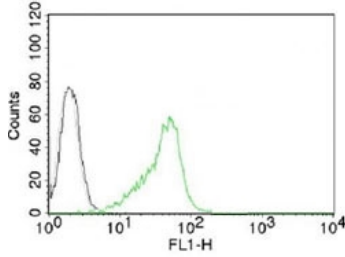
Species Reactivity	Human
Format	Purified
Clonality	Monoclonal (mouse origin)
Isotype	Mouse IgG1, kappa
Clone Name	NCM102-1
Purity	Protein G affinity chromatography
Gene ID	Unknown
Localization	Nucleoli
Applications	Flow Cytometry : 1-2ug/10 ⁶ cells Immunofluorescence : 1-2ug/ml Immunohistochemistry (FFPE) : 1-2ug/ml for 30 min at RT Prediluted IHC Only Format : incubate for 30 min at RT (1)
Limitations	This Nucleoli Marker antibody is available for research use only.



IHC testing of Nucleoli Marker antibody and FFPE human tonsil tissue. HIER: boil tissue sections in pH6, 10mM citrate buffer, for 10-20 min and allow to cool before testing.



Immunofluorescent staining of AF488 conjugated Nucleoli Marker antibody and FFPE human colon carcinoma. HIER: boil tissue sections in pH6, 10mM citrate buffer, for 10-20 min and allow to cool before testing.



Intracellular FACS testing of human 293 cells with Nucleoli Marker antibody (green) and isotype control (gray).

Description

The nucleolus is the largest structure in the nucleus of eukaryotic cells, where it primarily serves as the site of ribosome synthesis and assembly. Nucleoli also have other important functions like assembly of signal recognition particles and playing a role in the cell's response to stress. Nucleoli are made of proteins and RNA and form around specific chromosomal regions. [Wiki]

Application Notes

Titering of the Nucleoli Marker antibody may be required for optimal performance.

2. The prediluted format is supplied in a dropper bottle and is optimized for use in IHC. After epitope retrieval step (if required), drip mAb solution onto the tissue section and incubate at RT for 30 min.

Immunogen

A preparation of myeloid leukemia cell nuclei was used as the immunogen.

Storage

Store the Nucleoli Marker antibody at 2-8oC (with azide) or aliquot and store at -20oC or colder (without azide).