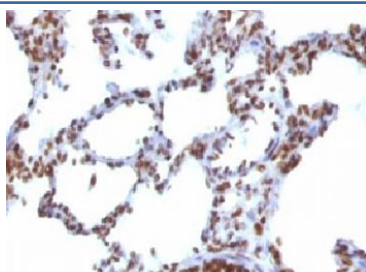


## Nuclear Antigen Antibody [clone NUCM1-1] (V7192)

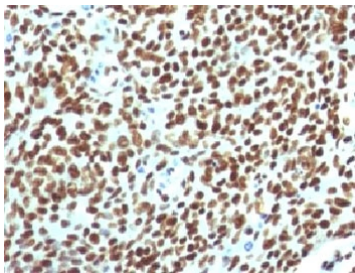
Catalog No.	Formulation	Size
V7192-100UG	0.2 mg/ml in 1X PBS with 0.1 mg/ml BSA (US sourced) and 0.05% sodium azide	100 ug
V7192-20UG	0.2 mg/ml in 1X PBS with 0.1 mg/ml BSA (US sourced) and 0.05% sodium azide	20 ug
V7192SAF-100UG	1 mg/ml in 1X PBS; BSA free, sodium azide free	100 ug
V7192IHC-7ML	Prediluted in 1X PBS with 0.1 mg/ml BSA (US sourced) and 0.05% sodium azide; *For IHC use only*	7 ml

[Bulk quote request](#)

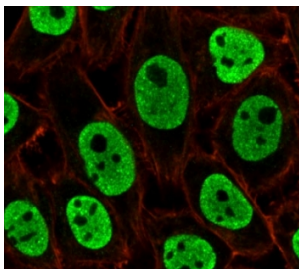
<b>Availability</b>	1-3 business days
<b>Species Reactivity</b>	Human, Rat
<b>Format</b>	Purified
<b>Host</b>	Mouse
<b>Clonality</b>	Monoclonal (mouse origin)
<b>Isotype</b>	Mouse IgG1, kappa
<b>Clone Name</b>	NUCM1-1
<b>Purity</b>	Protein G affinity chromatography
<b>UniProt</b>	Not Known
<b>Localization</b>	Nuclei
<b>Applications</b>	Immunofluorescence : 1-2ug/ml Immunohistochemistry (FFPE) : 1-2ug/ml for 30 min at RT Prediluted IHC Only Format : incubate for 30 min at RT (1)
<b>Limitations</b>	This Nuclear Antigen antibody is available for research use only.



IHC testing of FFPE rat lung with Nuclear Antigen antibody (clone NUCM1-1). FFPE testing requires sections to be boiled in pH 9 10mM Tris with 1mM EDTA for 10-20 minutes, followed by cooling at RT for 20 minutes, prior to staining.



IHC testing of FFPE human tonsil with Nuclear Antigen antibody (clone NUCM1-1). FFPE testing requires sections to be boiled in pH 9 10mM Tris with 1mM EDTA for 10-20 minutes, followed by cooling at RT for 20 minutes, prior to staining.



Immunofluorescent staining of PFA-fixed human HeLa cells with Nuclear Marker antibody (green, clone NUCM1-1) and Phalloidin (red).

## Description

This mAb recognizes an antigen associated with the nuclei in cells. It can be used to stain the nuclei in cell or tissue preparations and can be used as a nuclear marker in subcellular fractions.

## Application Notes

Titration of the Nuclear Antigen antibody may be required for optimal performance.

1. The prediluted format is supplied in a dropper bottle and is optimized for use in IHC. After epitope retrieval step (if required), drip mAb solution onto the tissue section and incubate at RT for 30 min.

## Immunogen

Human cell nuclei were used as the immunogen for the Nuclear Antigen antibody.

## Storage

Store the Nuclear Antigen antibody at 2-8°C (with azide) or aliquot and store at -20°C or colder (without azide).