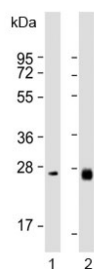


NTF3 Antibody / Neurotrophin 3 (F54448)

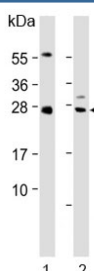
Catalog No.	Formulation	Size
F54448-0.4ML	In 1X PBS, pH 7.4, with 0.09% sodium azide	0.4 ml
F54448-0.08ML	In 1X PBS, pH 7.4, with 0.09% sodium azide	0.08 ml

Bulk quote request

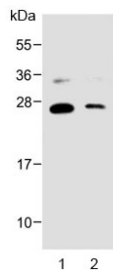
Availability	1-3 business days
Species Reactivity	Human, Rat
Format	Purified
Clonality	Polyclonal (rabbit origin)
Isotype	Rabbit Ig
Purity	Antigen affinity purified
UniProt	P20783
Applications	Western Blot : 1:500-1:2000 Flow Cytometry : 1:25 (1x10 ⁶ cells)
Limitations	This NTF3 antibody is available for research use only.



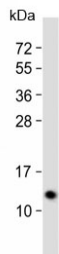
Western blot testing of human 1) liver and 2) ovary lysate with NTF3 antibody. Predicted molecular weight ~29 kDa.



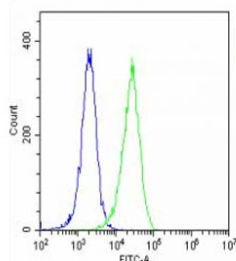
Western blot testing of human 1) ovary and 2) spleen lysate with NTF3 antibody. Predicted molecular weight ~29 kDa.



Western blot testing of 1) human brain and 2) rat brain lysate with NTF3 antibody.
Predicted molecular weight ~29 kDa.



Western blot testing of human recombinant partial protein with NTF3 antibody.



Flow cytometry testing of fixed and permeabilized human HeLa cells with NTF3 antibody; Blue=isotype control, Green= NTF3 antibody.

Description

NTF3 is a member of the neurotrophin family that controls survival and differentiation of mammalian neurons. This protein is closely related to both nerve growth factor and brain-derived neurotrophic factor. It may be involved in the maintenance of the adult nervous system, and may affect development of neurons in the embryo when it is expressed in human placenta. NTF3-deficient mice generated by gene targeting display severe movement defects of the limbs. The mature peptide of this protein is identical in all mammals examined including human, pig, rat and mouse.

Application Notes

The stated application concentrations are suggested starting points. Titration of the NTF3 antibody may be required due to differences in protocols and secondary/substrate sensitivity.

Immunogen

A portion of amino acids 152-184 from the human protein was used as the immunogen for the NTF3 antibody.

Storage

Aliquot the NTF3 antibody and store frozen at -20°C or colder. Avoid repeated freeze-thaw cycles.

