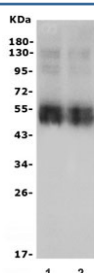


## NTCP1 Antibody / SLC10A1 (RQ5952)

Catalog No.	Formulation	Size
RQ5952	0.5mg/ml if reconstituted with 0.2ml sterile DI water	100 ug

**Bulk quote request**

<b>Availability</b>	1-3 business days
<b>Species Reactivity</b>	Rat
<b>Format</b>	Antigen affinity purified
<b>Clonality</b>	Polyclonal (rabbit origin)
<b>Isotype</b>	Rabbit IgG
<b>Purity</b>	Affinity purified
<b>Buffer</b>	Lyophilized from 1X PBS with 2% Trehalose and 0.025% sodium azide
<b>UniProt</b>	O08705
<b>Applications</b>	Western Blot : 0.5-1ug/ml
<b>Limitations</b>	This NTCP1 antibody is available for research use only.



Western blot testing of rat liver lysate (lane 1-2) with NTCP1 antibody. Expected molecular weight: 38-45 kDa.

## Description

Sodium/bile acid cotransporter also known as the Na<sup>+</sup>-taurocholate cotransporting polypeptide (NTCP) or liver bile acid transporter (LBAT) is a protein that in humans is encoded by the SLC10A1 (solute carrier family 10 member 1) gene. It is mapped to 12 C3-D1; 12 37.21 cM. The protein encoded by this gene belongs to the sodium/bile acid cotransporter family, which are integral membrane glycoproteins that participate in the enterohepatic circulation of bile acids. Two homologous transporters are involved in the reabsorption of bile acids; the ileal sodium/bile acid cotransporter with an apical cell localization that absorbs bile acids from the intestinal lumen, bile duct and kidney, and the liver-specific sodium/bile acid cotransporter, represented by this protein, that is found in the basolateral membranes of hepatocytes. Bile acids are the catabolic product of cholesterol metabolism, hence this protein is important for cholesterol homeostasis.

## Application Notes

Optimal dilution of the NTCP1 antibody should be determined by the researcher.

## Immunogen

Amino acids DQTKITYKAAATEDATPAALEK from the mouse protein were used as the immunogen for the NTCP1 antibody.

## Storage

After reconstitution, the NTCP1 antibody can be stored for up to one month at 4oC. For long-term, aliquot and store at -20oC. Avoid repeated freezing and thawing.