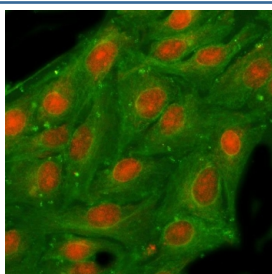


NSFL1C Antibody / NSFL1 cofactor p47 (RQ8636)

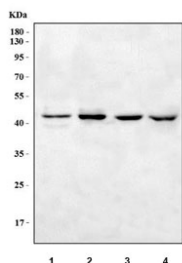
Catalog No.	Formulation	Size
RQ8636	0.5mg/ml if reconstituted with 0.2ml sterile DI water	100 ug

Bulk quote request

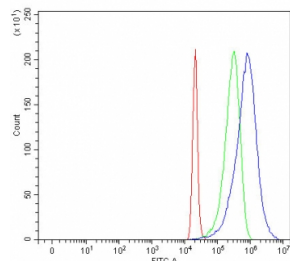
Availability	1-3 days
Species Reactivity	Human, Mouse, Rat
Predicted Reactivity	Mouse
Format	Antigen affinity purified
Host	Rabbit
Clonality	Polyclonal (rabbit origin)
Isotype	Rabbit IgG
Purity	Antigen affinity purified
Buffer	Lyophilized from 1X PBS with 2% Trehalose
UniProt	Q9UNZ2
Applications	Western Blot : 0.5-1ug/ml Immunofluorescence : 5ug/ml Flow Cytometry : 1-3ug/million cells ELISA : 0.1-0.5ug/ml
Limitations	This NSFL1C antibody is available for research use only.



Immunofluorescent staining of FFPE human A549 cells with NSFL1C antibody (red) and Beta Tubulin mAb (green). HIER: steam section in pH6 citrate buffer for 20 min.



Western blot testing of 1) human Jurkat, 2) human PC-3, 3) rat RH35 and 4) mouse NIH 3T3 cell lysate with NSFL1C antibody. Predicted molecular weight ~41 kDa.



Flow cytometry testing of fixed and permeabilized human 293T cells with NSFL1C antibody at 1ug/million cells (blocked with goat sera); Red=cells alone, Green=isotype control, Blue= NSFL1C antibody.

Description

NSFL1 cofactor p47 is a protein that in humans is encoded by the NSFL1C gene. N-ethylmaleimide-sensitive factor (NSF) and valosin-containing protein (p97) are two ATPases known to be involved in transport vesicle/target membrane fusion and fusions between membrane compartments. A trimer of the protein encoded by this gene binds a hexamer of cytosolic p97 and is required for p97-mediated regrowth of Golgi cisternae from mitotic Golgi fragments. Alternative splicing results in multiple transcript variants. A related pseudogene has been identified on chromosome 8.

Application Notes

Optimal dilution of the NSFL1C antibody should be determined by the researcher.

Immunogen

An E.coli-derived human recombinant protein (amino acids E20-E291) was used as the immunogen for the NSFL1C antibody.

Storage

After reconstitution, the NSFL1C antibody can be stored for up to one month at 4oC. For long-term, aliquot and store at -20oC. Avoid repeated freezing and thawing.