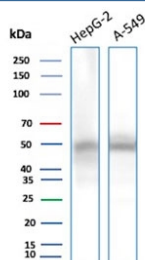


NSE gamma Antibody / ENO2 / Gamma Enolase [clone ENO2/9044] (V5451)

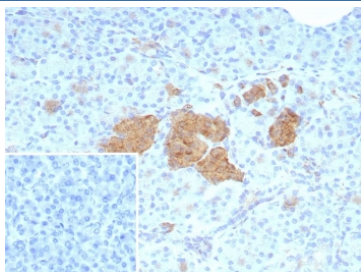
Catalog No.	Formulation	Size
V5451-100UG	0.2 mg/ml in 1X PBS with 0.1 mg/ml BSA (US sourced), 0.05% sodium azide	100 ug
V5451-20UG	0.2 mg/ml in 1X PBS with 0.1 mg/ml BSA (US sourced), 0.05% sodium azide	20 ug
V5451SAF-100UG	1 mg/ml in 1X PBS; BSA free, sodium azide free	100 ug

[Bulk quote request](#)

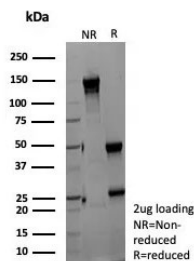
Availability	1-3 business days
Species Reactivity	Human
Format	Purified
Clonality	Monoclonal (mouse origin)
Isotype	Mouse IgG1, kappa
Clone Name	ENO2/9044
Purity	Protein A/G affinity
UniProt	P09104
Localization	Cytoplasm
Applications	Immunohistochemistry (FFPE) : 1-2ug/ml Western Blot : 2-4ug/ml
Limitations	This NSE gamma antibody is available for research use only.



Western blot testing of human 1) HepG2 and 2) A549 cell lysate with NSE gamma antibody (clone ENO2/9044). Predicted molecular weight ~47 kDa.



IHC staining of FFPE human pancreas tissue with NSE gamma antibody (clone ENO2/9044). Inset: PBS used in place of primary Ab (secondary Ab negative control). HIER: boil tissue sections in pH 9 10mM Tris with 1mM EDTA for 20 min and allow to cool before testing.



SDS-PAGE analysis of purified, BSA-free NSE gamma antibody (clone ENO2/9044) as confirmation of integrity and purity.

Description

This monoclonal antibody recognizes a protein of about 50kDa, which is identified as gamma-enolase. Three isoenzymes of enolases are identified, alpha, beta and gamma. Alpha-isoform is expressed in most tissues, whereas beta-form is expressed predominantly in muscle tissue whereas gamma-enolase is found predominantly in nervous tissue. These isoforms exist as both homodimers and heterodimers, and they play a role in converting phosphoglyceric acid to phosphoenolpyruvic acid in the glycolytic pathway. NSE-gamma is a useful marker to identify peripheral nerves and tumors of neuro-endocrine origins, such as pheochromocytomas. It is usually employed in combination with other markers such as Synaptophysin, Chromogranin A, and Neurofilament.

Application Notes

Optimal dilution of the NSE gamma antibody should be determined by the researcher.

Immunogen

A recombinant fragment of human NSE gamma (within amino acids 150-300) was used as the immunogen for the NSE gamma antibody.

Storage

Aliquot the NSE gamma antibody and store frozen at -20°C or colder. Avoid repeated freeze-thaw cycles.