

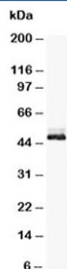
## NSE Antibody (R30242)

Catalog No.	Formulation	Size
R30242	0.5mg/ml if reconstituted with 0.2ml sterile DI water	100 ug

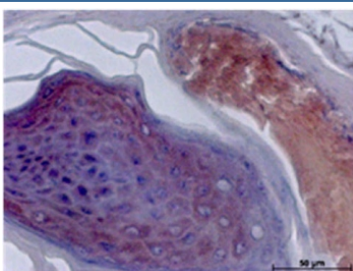
 Citations (1)

[Bulk quote request](#)

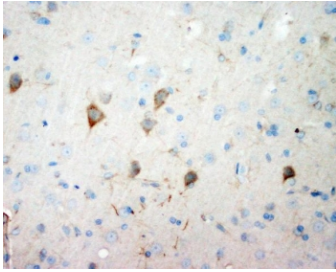
<b>Availability</b>	1-3 business days
<b>Species Reactivity</b>	Human, Mouse, Rat
<b>Format</b>	Antigen affinity purified
<b>Clonality</b>	Polyclonal (rabbit origin)
<b>Isotype</b>	Rabbit IgG
<b>Purity</b>	Antigen affinity
<b>Buffer</b>	Lyophilized from 1X PBS with 2.5% BSA and 0.025% sodium azide/thimerosal
<b>UniProt</b>	P09104
<b>Localization</b>	Cytoplasmic, membranous
<b>Applications</b>	Western Blot : 0.5-1ug/ml IHC (FFPE) : 0.5-1ug/ml
<b>Limitations</b>	This NSE antibody is available for research use only.



Western blot testing of NSE antibody and rat brain tissue lysate. Predicted molecular weight: ~47 kDa.



IHC testing of FFPE mouse skin with NSE antibody.



IHC testing of FFPE rat brain with NSE antibody. HIER: boil tissue sections in pH6, 10mM citrate buffer, for 20 min and allow to cool before testing.

## Description

NSE (Neuron specific enolase), also known as Enolase 2 (ENO2), is found in elevated concentrations in plasma in certain neoplasias. The enolases catalyze the interconversion of 2-phosphoglycerate to phosphoenolpyruvate in the glycolytic pathway. ENO2 gene contains 12 exons distributed over 9,213 nucleotides. Human neurone-specific enolase is mapped to chromosome 12p13.

## Application Notes

The stated application concentrations are suggested starting amounts. Titration of the NSE antibody may be required due to differences in protocols and secondary/substrate sensitivity.

## Immunogen

An amino acid sequence from the C-terminus of human NSE (EARFAGHNFRNPSVL) was used as the immunogen for this NSE antibody (100% homologous in human, mouse and rat).

## Storage

After reconstitution, the NSE antibody can be stored for up to one month at 4°C. For long-term, aliquot and store at -20°C. Avoid repeated freezing and thawing.