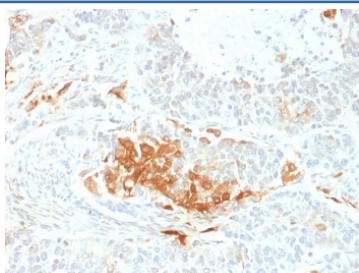


## NSE Antibody / Neuron-specific enolase gamma [clone ENO2/2706] (V8361)

Catalog No.	Formulation	Size
V8361-100UG	0.2 mg/ml in 1X PBS with 0.1 mg/ml BSA (US sourced) and 0.05% sodium azide	100 ug
V8361-20UG	0.2 mg/ml in 1X PBS with 0.1 mg/ml BSA (US sourced) and 0.05% sodium azide	20 ug
V8361SAF-100UG	1 mg/ml in 1X PBS; BSA free, sodium azide free	100 ug

**Bulk quote request**

<b>Availability</b>	1-3 business days
<b>Species Reactivity</b>	Human
<b>Format</b>	Purified
<b>Clonality</b>	Monoclonal (mouse origin)
<b>Isotype</b>	Mouse IgG1, kappa
<b>Clone Name</b>	ENO2/2706
<b>Purity</b>	Protein G affinity chromatography
<b>UniProt</b>	P09104
<b>Localization</b>	Cytoplasmic
<b>Applications</b>	ELISA : Use Ab at 2-4ug/ml for coating; order Ab without BSA Immunohistochemistry (FFPE) : 1-2ug/ml for 30 minutes at RT
<b>Limitations</b>	This NSE antibody is available for research use only.



IHC staining of FFPE human neuroendocrine tumor with NSE antibody (clone ENO2/2706). HIER: boil tissue sections in pH 9 10mM Tris with 1mM EDTA for 20 min and allow to cool before testing.

### Description

This monoclonal antibody recognizes a protein of about 50kDa, which is identified as gamma-enolase. Three isoenzymes

of enolases are identified, alpha, beta and gamma. Alpha-isoform is expressed in most tissues, whereas beta-form is expressed predominantly in muscle tissue whereas gamma-enolase is found only in nervous tissue. These isoforms exist as both homodimers and heterodimers, and they play a role in converting phosphoglyceric acid to phosphoenolpyruvic acid in the glycolytic pathway. NSE-gamma is a useful marker to identify peripheral nerves and tumors of neuro-endocrine origins, such as pheochromocytomas. It is usually employed in combination with other markers such as Synaptophysin, Chromogranin A, and Neurofilament.

## Application Notes

Optimal dilution of the NSE antibody should be determined by the researcher.

## Immunogen

A portion of amino acids 416-433 from the human protein was used as the immunogen for the NSE antibody.

## Storage

Store the NSE antibody at 2-8°C (with azide) or aliquot and store at -20°C or colder (without azide).