

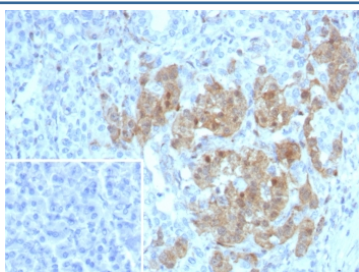
NSE Antibody / Neuron Specific Enolase / ENO2 [clone ENO/8253R] (V4230)

Catalog No.	Formulation	Size
V4230-100UG	0.2 mg/ml in 1X PBS with 0.1 mg/ml BSA (US sourced), 0.05% sodium azide	100 ug
V4230-20UG	0.2 mg/ml in 1X PBS with 0.1 mg/ml BSA (US sourced), 0.05% sodium azide	20 ug
V4230SAF-100UG	1 mg/ml in 1X PBS; BSA free, sodium azide free	100 ug

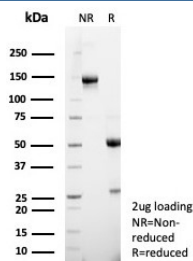
Recombinant **RABBIT MONOCLONAL**

[Bulk quote request](#)

Availability	1-3 business days
Species Reactivity	Human
Format	Purified
Clonality	Recombinant Rabbit Monoclonal
Isotype	Rabbit IgG, kappa
Clone Name	ENO/8253R
Purity	Protein A/G affinity
UniProt	P09104
Localization	Cytoplasm
Applications	Immunohistochemistry (FFPE) : 1-2ug/ml for 30 minutes at RT
Limitations	This NSE antibody is available for research use only.



IHC staining of FFPE human pancreas tissue with NSE antibody (clone ENO/8253R). Inset: PBS used in place of primary Ab (secondary Ab negative control). HIER: boil tissue sections in pH 9 10mM Tris with 1mM EDTA for 20 min and allow to cool before testing.



SDS-PAGE analysis of purified, BSA-free NSE gamma antibody (clone ENO/8253R) as confirmation of integrity and purity.

Description

This monoclonal antibody recognizes a protein of about 50kDa, which is identified as gamma-enolase. Three isoenzymes of enolases are identified, alpha, beta and gamma. Alpha-isoform is expressed in most tissues, whereas beta-form is expressed predominantly in muscle tissue whereas gamma-enolase is found only in nervous tissue. These isoforms exist as both homodimers and heterodimers, and they play a role in converting phosphoglyceric acid to phosphoenolpyruvic acid in the glycolytic pathway. NSE-gamma is a useful marker to identify peripheral nerves and tumors of neuro-endocrine origins, such as pheochromocytomas. It is usually employed in combination with other markers such as Synaptophysin, Chromogranin A, and Neurofilament.

Application Notes

Optimal dilution of the NSE antibody should be determined by the researcher.

Immunogen

A recombinant fragment of human NSE gamma (within amino acids 234-434) was used as the immunogen for the NSE antibody.

Storage

Aliquot the NSE antibody and store frozen at -20°C or colder. Avoid repeated freeze-thaw cycles.