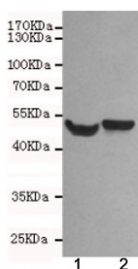


NSE Antibody / Neuron Specific Enolase [clone 1H8-B4] (F54039)

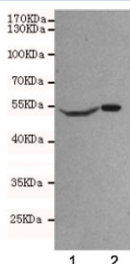
Catalog No.	Formulation	Size
F54039-0.1ML	In 1X PBS with 0.03% ProClin 300	0.1 ml

Bulk quote request

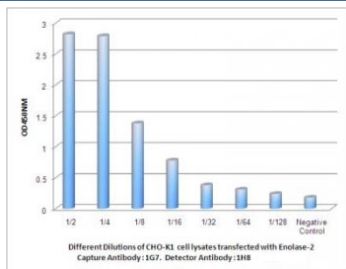
Availability	1-3 business days
Species Reactivity	Human, Mouse, Rat
Format	Purified
Clonality	Monoclonal (mouse origin)
Isotype	Mouse IgG1
Clone Name	1H8-B4
Purity	Protein G affinity
UniProt	P09104
Applications	Western Blot : 1:500 ELISA : suitable
Limitations	This NSE antibody is available for research use only.



Western blot testing of 1) rat brain and 2) mouse brain lysates using NSE antibody at 1:500. Predicted molecular weight ~47 kDa.



Western blot testing of human 1) SHSY-5Y and 2) U87-MG cell lysates using NSE antibody at 1:500. Predicted molecular weight ~47 kDa.



Observed NSE / Neuron Specific Enolase levels in CHO-K1 cell lysates transfected with NSE at different dilution. Pairing: [neuron-specific-enolase-antibody-1g7-b4-f54038](#) (capture) and 1H8 (detect).

Description

Neuron Specific Enolase (NSE, Enolase-2) has neurotrophic and neuroprotective properties on a broad spectrum of central nervous system (CNS) neurons. Binds, in a calcium-dependent manner, to cultured neocortical neurons and promotes cell survival.

Application Notes

The stated application concentrations are suggested starting points. Titration of the NSE antibody may be required due to differences in protocols and secondary/substrate sensitivity.

Immunogen

A synthetic peptide corresponding to part of the human protein was used as the immunogen for the NSE antibody.

Storage

Aliquot the NSE antibody and store frozen at -20oC or colder. Avoid repeated freeze-thaw cycles.