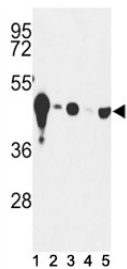


NSE Antibody (F48201)

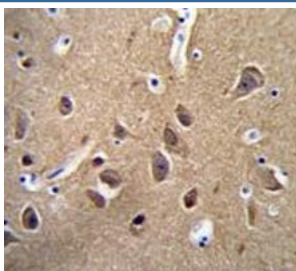
Catalog No.	Formulation	Size
F48201-0.4ML	In 1X PBS, pH 7.4, with 0.09% sodium azide	0.4 ml
F48201-0.08ML	In 1X PBS, pH 7.4, with 0.09% sodium azide	0.08 ml

[Bulk quote request](#)

Availability	1-3 business days
Species Reactivity	Human, Mouse
Predicted Reactivity	Rat
Format	Antigen affinity purified
Clonality	Polyclonal (rabbit origin)
Isotype	Rabbit Ig
Purity	Antigen affinity
UniProt	P09104
Applications	Western Blot : 1:1000 IHC (Paraffin) : 1:50-1:100
Limitations	This NSE antibody is available for research use only.



Western blot analysis of NSE antibody and (1) mouse cerebellum tissue and (2) Y79, (3) HepG2, (4) Jurkat and (5) CEM lysate. Predicted molecular weight: ~47 kDa.



NSE antibody immunohistochemistry analysis in formalin fixed and paraffin embedded human brain tissue.

Description

Neuron Specific Enolase, also called Gamma-enolase, and Enolase 2 (ENO2) has neurotrophic and neuroprotective properties on a broad spectrum of central nervous system (CNS) neurons. Binds, in a calcium-dependent manner, to cultured neocortical neurons and promotes cell survival (By similarity). [UniProt]

Application Notes

Titration of the NSE antibody may be required due to differences in protocols and secondary/substrate sensitivity.

Immunogen

A portion of amino acids 6-32 from the human protein was used as the immunogen for this NSE antibody.

Storage

Aliquot the NSE antibody and store frozen at -20oC or colder. Avoid repeated freeze-thaw cycles.