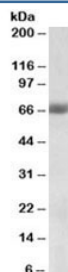


NRF2 Antibody / NRF2L2 (R34465)

Catalog No.	Formulation	Size
R34465-100UG	0.5 mg/ml in 1X TBS, pH7.3, with 0.5% BSA (US sourced) and 0.02% sodium azide	100 ug

[Bulk quote request](#)

Availability	1-3 business days
Species Reactivity	Human
Predicted Reactivity	Cow, Dog, Mouse, Pig, Rat
Format	Antigen affinity purified
Host	Goat
Clonality	Polyclonal (goat origin)
Isotype	Goat Ig
Purity	Antigen affinity
Gene ID	4780
Applications	Western Blot : 0.3-1ug/ml ELISA (peptide) LOD : 1:64000
Limitations	This NRF2 antibody is available for research use only.



Western blot testing of human lung lysate with NRF2 antibody at 0.3ug/ml

Description

Additional name(s) for this target protein: Nuclear factor (erythroid-derived 2)-like 2; NFE2L2

Application Notes

Optimal dilution of the NRF2 antibody should be determined by the researcher.

Immunogen

Amino acids KHSSRLEAHLTRDE were used as the immunogen for this NRF2 antibody.

Storage

Aliquot and store the NRF2 antibody at -20oC.