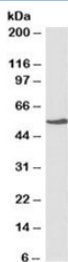


## NR5A2 Antibody (R36406)

Catalog No.	Formulation	Size
R36406-100UG	0.5 mg/ml in 1X TBS, pH7.3, with 0.5% BSA (US sourced) and 0.02% sodium azide	100 ug

[Bulk quote request](#)

<b>Availability</b>	1-3 business days
<b>Species Reactivity</b>	Human
<b>Format</b>	Antigen affinity purified
<b>Host</b>	Goat
<b>Clonality</b>	Polyclonal (goat origin)
<b>Isotype</b>	Goat Ig
<b>Purity</b>	Antigen affinity
<b>Gene ID</b>	2494
<b>Applications</b>	Western Blot : 1-3ug/ml ELISA (peptide) LOD : 1:128000
<b>Limitations</b>	This NR5A2 antibody is available for research use only.



NR5A2 Antibody HepG2 WB. Western blot testing of HepG2 lysate with NR5A2 antibody at 1ug/ml. Predicted molecular weight: ~56/61kDa (isoforms 1/2).

## Description

Additional name(s) for this target protein: Liver receptor homolog 1 (LRH1); nuclear receptor subfamily 5, group A, member 2

For additional LRH1/NR5A2 research antibodies validated by HuProt specificity analysis, flow cytometry, and immunohistochemistry, explore the broader [LRH1 Antibody](#) page featuring clone PCR-P-NR5A2-1B8.

## Application Notes

Optimal dilution of the NR5A2 antibody should be determined by the researcher.

1. This sequence is common to isoforms 1 and 2.

## Immunogen

Amino acids QEQANRSKHEK were used as the immunogen for this NR5A2 antibody. (1)

## Storage

Aliquot and store the NR5A2 antibody at -20oC.