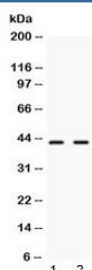


## NR2F6 Antibody (R32549)

| Catalog No. | Formulation   | Size   |
|-------------|---|--------|
| R32549      | 0.5mg/ml if reconstituted with 0.2ml sterile DI water | 100 ug |

**Bulk quote request**

|                           |   |
|---------------------------|---|
| <b>Availability</b>       | 1-3 business days   |
| <b>Species Reactivity</b> | Human, Rat  |
| <b>Format</b>             | Antigen affinity purified                                     |
| <b>Clonality</b>          | Polyclonal (rabbit origin)                                    |
| <b>Isotype</b>            | Rabbit IgG  |
| <b>Purity</b>             | Antigen affinity  |
| <b>Buffer</b>             | Lyophilized from 1X PBS with 2.5% BSA and 0.025% sodium azide |
| <b>UniProt</b>            | P10588  |
| <b>Applications</b>       | Western Blot : 0.5-1ug/ml                                     |
| <b>Limitations</b>        | This NR2F6 antibody is available for research use only.       |



Western blot testing of 1) rat liver and 2) human HeLa lysate with NR2F6 antibody at 0.5ug/ml. Predicted/observed molecular weight ~43 kDa.

## Description

Nuclear receptor subfamily 2 group F member 6 is a protein that in humans is encoded by the NR2F6 gene. It is a member of the nuclear receptor family of intracellular transcription factors. It has been shown to function as a coregulator of other nuclear receptors. NR2F6 impairs the formation of mature red blood cells in animals that over-express NR2F6 in their bone marrow. Mice that over expression of NR2F6 in their bone marrow cells have a block at the pro-erythroblast stage of blood cell development both in the bone marrow and in the spleen of animals that have excessive expression of NR2F6. So, when inhibition of differentiation of stem cell is desired, inhibition of differentiation is achieved through induction of increased NR2F6 activity. In situations where differentiation of stem cells into a cell of increased maturity is desired, inhibition of NR2F6 activity must be performed.

## Application Notes

Differences in protocols and secondary/substrate sensitivity may require the NR2F6 antibody to be titrated for optimal performance.

## Immunogen

Amino acids M270-Q404 from the human protein were used as the immunogen for the NR2F6 antibody.

## Storage

After reconstitution, the NR2F6 antibody can be stored for up to one month at 4°C. For long-term, aliquot and store at -20°C. Avoid repeated freezing and thawing.