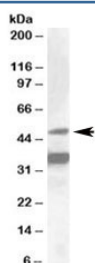


## NR1I2 Antibody (R33931)

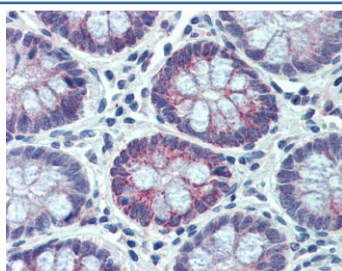
Catalog No.	Formulation	Size
R33931-100UG	0.5 mg/ml in 1X TBS, pH7.3, with 0.5% BSA (US sourced) and 0.02% sodium azide	100 ug

[Bulk quote request](#)

Availability	1-3 business days
Species Reactivity	Human
Format	Antigen affinity purified
Host	Goat
Clonality	Polyclonal (goat origin)
Isotype	Goat Ig
Purity	Antigen affinity
Gene ID	8856
Applications	Western Blot : 1-3ug/ml IHC (FFPE) : 3.75ug/ml ELISA (peptide) LOD : 1:4000
Limitations	This NR1I2 antibody is available for research use only.



Western blot testing of HepG2 lysate with NR1I2 antibody at 1ug/ml. Predicted molecular weight: ~50 kDa.



IHC testing of FFPE human small intestine tissue with NR1I2 antibody at 3.75ug/ml. Required HIER: steamed antigen retrieval with pH6 citrate buffer; AP-staining.

## Description

Additional name(s) for this target protein: Nuclear receptor subfamily 1, group I, member 2

## Application Notes

Optimal dilution of the NR1I2 antibody should be determined by the researcher.

## Immunogen

Amino acids EQFAITLKS<sup>Y</sup>IECNR were used as the immunogen for this NR1I2 antibody.

## Storage

Aliquot and store the NR1I2 antibody at -20oC.