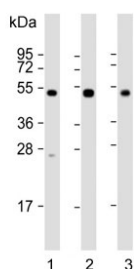


## NPTX1 Antibody / Neuronal pentraxin 1 (F54253)

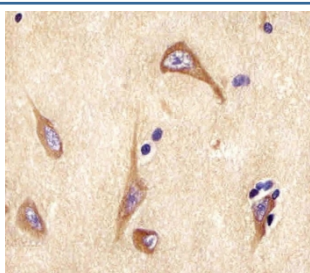
Catalog No.	Formulation	Size
F54253-0.4ML	In 1X PBS, pH 7.4, with 0.09% sodium azide	0.4 ml
F54253-0.08ML	In 1X PBS, pH 7.4, with 0.09% sodium azide	0.08 ml

**Bulk quote request**

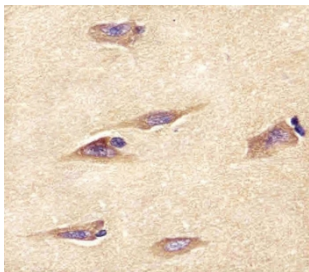
<b>Availability</b>	1-3 business days
<b>Species Reactivity</b>	Human, Mouse, Rat
<b>Format</b>	Purified
<b>Clonality</b>	Polyclonal (rabbit origin)
<b>Isotype</b>	Rabbit Ig
<b>Purity</b>	Antigen affinity purified
<b>UniProt</b>	Q15818
<b>Applications</b>	Western Blot : 1:1000-1:2000 Immunohistochemistry (FFPE) : 1:25-1:50
<b>Limitations</b>	This NPTX1 antibody is available for research use only.



Western blot testing of 1) human brain, 2) mouse brain and 3) rat brain lysate with NPTX1 antibody. Predicted molecular weight ~47 kDa.



IHC testing of FFPE human brain tissue with NPTX1 antibody. HIER: steam section in pH6 citrate buffer for 20 min and allow to cool prior to staining.



IHC testing of FFPE human brain tissue with NPTX1 antibody. HIER: steam section in pH6 citrate buffer for 20 min and allow to cool prior to staining.

## Description

NPTX1 is a member of the neuronal pentraxin family. Human neuronal pentraxin 1 is similar to rat NP1 which is a binding protein for the snake venom toxin taipoxin.

## Application Notes

The stated application concentrations are suggested starting points. Titration of the NPTX1 antibody may be required due to differences in protocols and secondary/substrate sensitivity.

## Immunogen

A portion of amino acids 322-350 from the human protein were used as the immunogen for the NPTX1 antibody.

## Storage

Aliquot the NPTX1 antibody and store frozen at -20oC or colder. Avoid repeated freeze-thaw cycles.