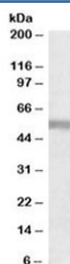


NPR3 Antibody (R34268)

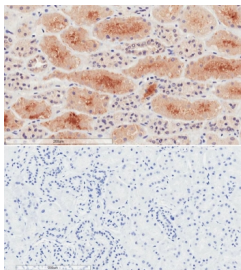
Catalog No.	Formulation	Size
R34268-100UG	0.5 mg/ml in 1X TBS, pH7.3, with 0.5% BSA (US sourced) and 0.02% sodium azide	100 ug

[Bulk quote request](#)

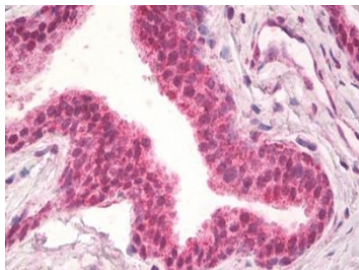
Availability	1-3 business days
Species Reactivity	Human
Predicted Reactivity	Mouse, Rat, Dog, Pig, Cow
Format	Antigen affinity purified
Host	Goat
Clonality	Polyclonal (goat origin)
Isotype	Goat Ig
Purity	Antigen affinity
Gene ID	4883
Localization	Cytoplasmic
Applications	Western Blot : 1-3ug/ml IHC (FFPE) : 2-10ug/ml ELISA (peptide) LOD : 1:16000
Limitations	This NPR3 antibody is available for research use only.



Western blot testing of human placenta lysate with NPR3 antibody at 1ug/ml. Predicted molecular weight: ~60 kDa.



IHC testing of FFPE human kidney tissue with (top) and without (bottom) NPR3 antibody at 2ug/ml. HIER: steam section in pH6 citrate buffer for 20 min.



IHC testing of FFPE human prostate tissue with NPR3 antibody at 10ug/ml. Required HIER: steamed antigen retrieval with pH6 citrate buffer; AP-staining.

Description

Additional name(s) for this target protein: Natriuretic peptide receptor C/3

Application Notes

Optimal dilution of the NPR3 antibody should be determined by the researcher.

Immunogen

Amino acids HRELREDSIRSHFS were used as the immunogen for this NPR3 antibody. The amino acid sequence used as immunogen is from the cytoplasmic portion of the protein.

Storage

Aliquot and store the NPR3 antibody at -20oC.