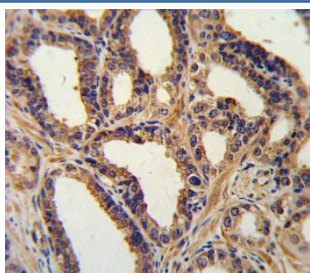


NPPA Antibody / Atrial Natriuretic Peptide/Factor (F54517)

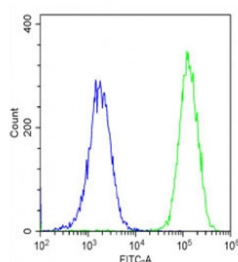
Catalog No.	Formulation	Size
F54517-0.2ML	In 1X PBS, pH 7.4, with 0.09% sodium azide	0.2 ml
F54517-0.05ML	In 1X PBS, pH 7.4, with 0.09% sodium azide	0.05 ml

Bulk quote request

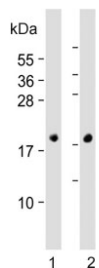
Availability	1-3 business days
Species Reactivity	Human, Mouse
Format	Purified
Clonality	Polyclonal (rabbit origin)
Isotype	Rabbit Ig
Purity	Antigen affinity purified
UniProt	P01160
Applications	Western Blot : 1:500-1:2000 Immunohistochemistry (FFPE) : 1:25 Flow Cytometry : 1:25 (1x10 ⁶ cells)
Limitations	This NPPA antibody is available for research use only.



IHC testing of FFPE human prostate carcinoma tissue with NPPA antibody. HIER: steam section in pH6 citrate buffer for 20 min and allow to cool prior to staining.



Flow cytometry testing of fixed and permeabilized human RD cells with NPPA antibody; Blue=isotype control, Green = NPPA antibody.



Western blot testing of 1) human fetal heart and 2) mouse heart lysate with NPPA antibody. Predicted molecular weight ~17 kDa.

Description

NPPA belongs to the natriuretic peptide family. Natriuretic peptides are implicated in the control of extracellular fluid volume and electrolyte homeostasis. This protein is synthesized as a large precursor(containing a signal peptide), which is processed to release a peptide from the N-terminus with similarity to vasoactive peptide, cardiodilatin, and another peptide from the C-terminus with natriuretic-diuretic activity.

Application Notes

The stated application concentrations are suggested starting points. Titration of the NPPA antibody may be required due to differences in protocols and secondary/substrate sensitivity.

Immunogen

A portion of amino acids 30-56 from the human protein was used as the immunogen for the NPPA antibody.

Storage

Aliquot the NPPA antibody and store frozen at -20oC or colder. Avoid repeated freeze-thaw cycles.