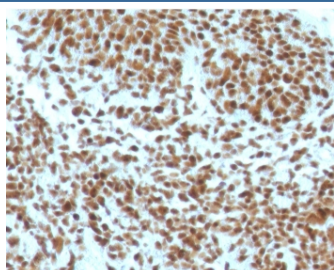


## NPM Antibody / Nucleophosmin [clone NLPP1-1] (V7607)

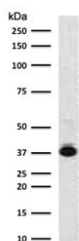
Catalog No.	Formulation	Size
V7607-100UG	0.2 mg/ml in 1X PBS with 0.1 mg/ml BSA (US sourced) and 0.05% sodium azide	100 ug
V7607-20UG	0.2 mg/ml in 1X PBS with 0.1 mg/ml BSA (US sourced) and 0.05% sodium azide	20 ug
V7607SAF-100UG	1 mg/ml in 1X PBS; BSA free, sodium azide free	100 ug
V7607IHC-7ML	Prediluted in 1X PBS with 0.1 mg/ml BSA (US sourced) and 0.05% sodium azide; *For IHC use only*	7 ml

[Bulk quote request](#)

<b>Availability</b>	1-3 business days
<b>Species Reactivity</b>	Human
<b>Format</b>	Purified
<b>Host</b>	Mouse
<b>Clonality</b>	Monoclonal (mouse origin)
<b>Isotype</b>	Mouse IgG1, kappa
<b>Clone Name</b>	NLPP1-1
<b>Purity</b>	Protein G affinity chromatography
<b>UniProt</b>	P06748
<b>Localization</b>	Nuclear, cytoplasmic
<b>Applications</b>	Western Blot : 1-2ug/ml Immunohistochemistry (FFPE) : 1-2ug/ml for 30 min at RT Prediluted IHC Only Format : incubate for 30 min at RT (1)
<b>Limitations</b>	This NPM antibody is available for research use only.



IHC staining of FFPE human basal cell carcinoma with NPM antibody (clone NLPP1-1).  
HIER: boil tissue sections in pH 9 10mM Tris with 1mM EDTA for 10-20 min and allow to cool before testing.



Western blot testing of human K562 cell lysate with Nucleophosmin antibody (clone NLPP1-1). Expected molecular weight ~38 kDa.

## Description

The protein encoded by the NPM1 gene is involved in several cellular processes, including centrosome duplication, protein chaperoning, and cell proliferation. The encoded phosphoprotein shuttles between the nucleolus, nucleus, and cytoplasm, chaperoning ribosomal proteins and core histones from the nucleus to the cytoplasm. This protein is also known to sequester the tumor suppressor ARF in the nucleolus, protecting it from degradation until it is needed. Mutations in this gene are associated with acute myeloid leukemia. [RefSeq]

## Application Notes

Optimal dilution of the NPM antibody should be determined by the researcher.

1. The prediluted format is supplied in a dropper bottle and is optimized for use in IHC. After epitope retrieval step (if required), drip mAb solution onto the tissue section and incubate at RT for 30 min.

## Immunogen

A portion of amino acids 185-287 from the human protein was used as the immunogen for the NPM antibody.

## Storage

Store the NPM antibody at 2-8°C (with azide) or aliquot and store at -20°C or colder (without azide).