

NPC2 Antibody / Niemann Pick C2 (RQ4408)

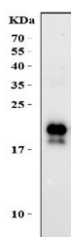
Catalog No.	Formulation	Size
RQ4408	0.5mg/ml if reconstituted with 0.2ml sterile DI water	100 ug

Bulk quote request

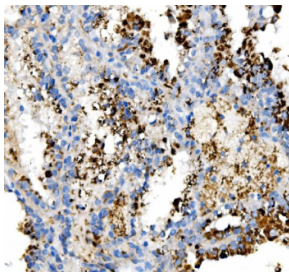
Availability	1-3 business days
Species Reactivity	Human
Format	Antigen affinity purified
Clonality	Polyclonal (rabbit origin)
Isotype	Rabbit IgG
Purity	Antigen affinity purified
Buffer	Lyophilized from 1X PBS with 2% Trehalose
UniProt	P61916
Localization	Cytoplasmic, secreted
Applications	Western Blot : 0.5-1ug/ml Immunohistochemistry (FFPE) : 2-5ug/ml
Limitations	This NPC2 antibody is available for research use only.



Western blot testing of human SK-OV-3 cell lysate with NPC2 antibody at 0.5ug/ml. Predicted molecular weight: ~17 kDa, can be observed as a ~21/23 kDa doublet in human samples. (Ref 1).



Western blot testing of human U-2 OS cell lysate with NPC2 antibody at 0.5ug/ml. Predicted molecular weight: ~17 kDa, can be observed as a ~21/23 kDa doublet in human samples. (Ref 1).



IHC testing of FFPE human renal cancer tissue with NPC2 antibody at 2ug/ml. Required HIER: steam section in pH6 citrate buffer for 20 min and allow to cool prior to staining.

Description

NPC2 is a protein associated with Niemann-Pick disease, type C. This gene is mapped to chromosome 14q24.3. It encodes a protein containing a lipid recognition domain. The encoded protein may function in regulating the transport of cholesterol through the late endosomal/lysosomal system. Mutations in this gene have been associated with Niemann-Pick disease, type C2 and frontal lobe atrophy.

Application Notes

Optimal dilution of the NPC2 antibody should be determined by the researcher.

Immunogen

Amino acids KSEYPSIKLVVEWQLQDDKNQSLFCWEIPVQIVS from the human protein were used as the immunogen for the NPC2 antibody.

Storage

After reconstitution, the NPC2 antibody can be stored for up to one month at 4°C. For long-term, aliquot and store at -20°C. Avoid repeated freezing and thawing.

References (1)