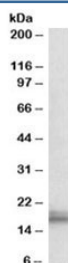


## Npc2 Antibody / Niemann pick c2 (R35185)

| Catalog No.  | Formulation   | Size   |
|--------------|---|--------|
| R35185-100UG | 0.5 mg/ml in 1X TBS, pH7.3, with 0.5% BSA (US sourced) and 0.02% sodium azide | 100 ug |

[Bulk quote request](#)

|                      |  |
|----------------------|--|
| Availability         | 1-3 business days  |
| Species Reactivity   | Mouse  |
| Predicted Reactivity | Rat  |
| Format               | Antigen affinity purified                                    |
| Host                 | Goat   |
| Clonality            | Polyclonal (goat origin)                                     |
| Isotype              | Goat Ig  |
| Purity               | Antigen affinity   |
| Gene ID              | 67963  |
| Applications         | Western Blot : 0.1-0.3ug/ml<br>ELISA (peptide) LOD : 1:32000 |
| Limitations          | This Npc2 antibody is available for research use only.       |



Western blot testing of mouse kidney lysate with Npc2 antibody at 0.1ug/ml.  
Predicted/observed molecular weight: ~17 kDa.

### Description

Additional name(s) for this target protein: Niemann-Pick disease, type C2

### Application Notes

Optimal dilution of the Npc2 antibody should be determined by the researcher.

## Immunogen

Amino acids QAEPLHFKDCGSK were used as the immunogen for this Npc2 antibody.

## Storage

Aliquot and store the Npc2 antibody at -20oC.