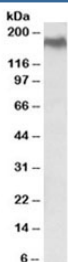


NPC1 Antibody / Niemann Pick C1 (R36320)

Catalog No.	Formulation	Size
R36320-100UG	0.5 mg/ml in 1X TBS, pH7.3, with 0.5% BSA (US sourced) and 0.02% sodium azide	100 ug

[Bulk quote request](#)

Availability	1-3 business days
Species Reactivity	Human
Format	Antigen affinity purified
Host	Goat
Clonality	Polyclonal (goat origin)
Isotype	Goat Ig
Purity	Antigen affinity
Gene ID	4864
Applications	Western Blot : 0.5-1.5ug/ml ELISA (peptide) LOD : 1:128000
Limitations	This NPC1 antibody is available for research use only.



Western blot testing of HEK293 lysate with NPC1 antibody at 0.5ug/ml. Predicted molecular weight ~142/170~190 kDa (unmodified/glycosylated).

Description

Additional name(s) for this target protein: Niemann Pick type C1

Application Notes

Optimal dilution of the NPC1 antibody should be determined by the researcher.

Immunogen

Amino acids TYHTVLQTSADFID were used as the immunogen for this NPC1 antibody.

Storage

Aliquot and store the NPC1 antibody at -20oC.