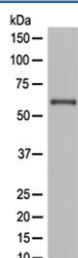


NOX4 Antibody / NADPH oxidase 4 [clone E-14] (RQ4482)

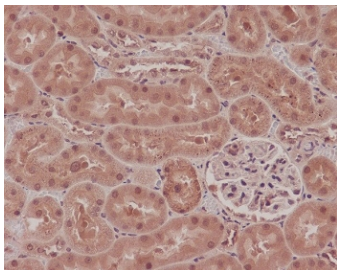
Catalog No.	Formulation	Size
RQ4482	Antibody in PBS with 0.02% sodium azide, 50% glycerol and 0.4-0.5mg/ml BSA	100 ul

[Bulk quote request](#)

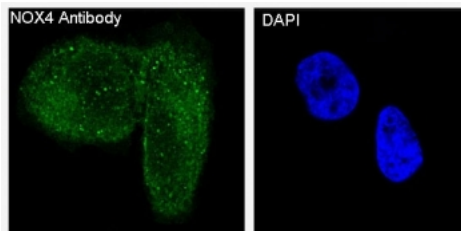
Availability	1-2 weeks
Species Reactivity	Human, Mouse, Rat
Format	Purified
Clonality	Rabbit Monoclonal
Isotype	Rabbit IgG
Clone Name	E-14
Purity	Protein A affinity
UniProt	Q9NPH5
Localization	Cytoplasm (ER membrane)
Applications	Western Blot : 1:500-1:2000 Immunohistochemistry (FFPE) : 1:50-1:200 Immunofluorescence : 1:50-1:200
Limitations	This NOX4 antibody is available for research use only.



Western blot testing of human JAR cell lysate with NOX4 antibody at 0.5ug/ml. Expected molecular weight: ~65 kDa, 75-80 kDa.



IHC testing of FFPE rat kidney with NOX4 antibody at 2ug/ml. HIER: boil tissue sections in pH6, 10mM citrate buffer, for 10-20 min followed by cooling at RT for 20 min.



Immunofluorescent staining of human HeLa cells with NOX4 antibody (green) and DAPI nuclear stain (blue).

Description

Constitutive NADPH oxidase which generates superoxide intracellularly upon formation of a complex with CYBA/p22phox. Regulates signaling cascades probably through phosphatases inhibition. May function as an oxygen sensor regulating the KCNK3/TASK-1 potassium channel and HIF1A activity. May regulate insulin signaling cascade. May play a role in apoptosis, bone resorption and lipopolysaccharide-mediated activation of NFkB. May produce superoxide in the nucleus and play a role in regulating gene expression upon cell stimulation. Isoform 3 is not functional. Isoform 5 and isoform 6 display reduced activity. [UniProt]

Application Notes

Optimal dilution of the NOX4 antibody should be determined by the researcher.

Immunogen

A synthetic peptide from human NOX4 was used as the immunogen for the NOX4 antibody.

Storage

Store the NOX4 antibody at -20oC.