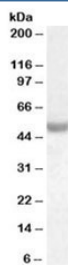


NOVA1 Antibody (R35595)

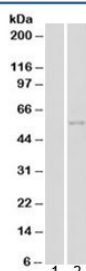
Catalog No.	Formulation	Size
R35595-100UG	0.5 mg/ml in 1X TBS, pH7.3, with 0.5% BSA (US sourced) and 0.02% sodium azide	100 ug

[Bulk quote request](#)

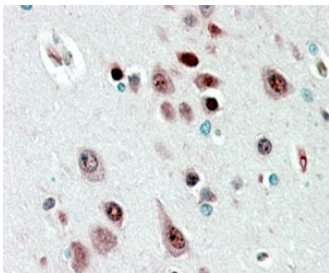
Availability	1-3 business days
Species Reactivity	Human
Format	Antigen affinity purified
Host	Goat
Clonality	Polyclonal (goat origin)
Isotype	Goat Ig
Purity	Antigen affinity
Gene ID	4857
Applications	Western Blot : 0.01-0.03ug/ml Immunohistochemistry (FFPE) : 2-4ug/ml ELISA (peptide) LOD : 1:64000
Limitations	This NOVA1 antibody is available for research use only.



Western blot testing of human breast cancer lysate with NOVA1 antibody at 0.01ug/ml. Predicted molecular weight: ~52kDa.



Western blot of HEK293 lysate overexpressing NOVA1 probed with NOVA1 antibody (mock transfection in lane 1). Predicted molecular weight: ~52kDa.



IHC staining of FFPE human cerebral cortex with NOVA1 antibody at 2.5ug/ml. HIER: steamed with pH6 citrate buffer, AP-staining.

Description

Additional name(s) for this target protein: Neuro-oncological ventral antigen 1

Application Notes

Optimal dilution of the NOVA1 antibody should be determined by the researcher.

Immunogen

Amino acids REMPQNVAKTEPVS were used as the immunogen for this NOVA1 antibody.

Storage

Aliquot and store the NOVA1 antibody at -20oC.