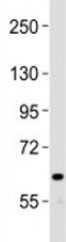


NOTCH4 Antibody (F53420)

Catalog No.	Formulation	Size
F53420-0.4ML	In 1X PBS, pH 7.4, with 0.09% sodium azide	0.4 ml
F53420-0.08ML	In 1X PBS, pH 7.4, with 0.09% sodium azide	0.08 ml

[Bulk quote request](#)

Availability	1-3 business days
Species Reactivity	Human
Format	Antigen affinity purified
Host	Rabbit
Clonality	Polyclonal (rabbit origin)
Isotype	Rabbit Ig
Purity	Antigen affinity
UniProt	Q99466
Applications	Western Blot : 1:2000
Limitations	This NOTCH4 antibody is available for research use only.



Western blot testing of NOTCH4 antibody at 1:2000 dilution + human liver lysate;
Predicted band size : 210 kDa.

Description

Functions as a receptor for membrane-bound ligands Jagged1, Jagged2 and Delta1 to regulate cell-fate determination. Upon ligand activation through the released notch intracellular domain (NICD) it forms a transcriptional activator complex with RBPJ/RBPSUH and activates genes of the enhancer of split locus. Affects the implementation of differentiation, proliferation and apoptotic programs. May regulate branching morphogenesis in the developing vascular system (By similarity).

Application Notes

Titration of the NOTCH4 antibody may be required due to differences in protocols and secondary/substrate sensitivity.

Immunogen

This NOTCH4 antibody was produced from a rabbit immunized with a KLH conjugated synthetic peptide between 1819-1851 amino acids from the C-terminal region of human NOTCH4.

Storage

Aliquot the NOTCH4 antibody and store frozen at -20oC or colder. Avoid repeated freeze-thaw cycles.