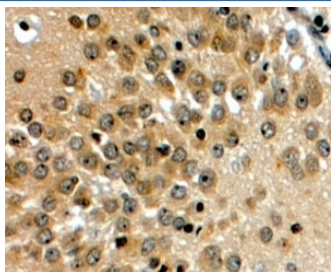


NOTCH3 Antibody (R35352)

| Catalog No. | Formulation | Size |
|--------------|---|--------|
| R35352-100UG | 0.5 mg/ml in 1X TBS, pH7.3, with 0.5% BSA (US sourced) and 0.02% sodium azide | 100 ug |

[Bulk quote request](#)

| | |
|----------------------|---|
| Availability | 1-3 business days |
| Species Reactivity | Human |
| Predicted Reactivity | Mouse, Rat |
| Format | Antigen affinity purified |
| Host | Goat |
| Clonality | Polyclonal (goat origin) |
| Isotype | Goat Ig |
| Purity | Antigen affinity |
| Gene ID | 4854 |
| Applications | Immunohistochemistry (FFPE) : 4-6ug/ml ELISA (peptide) LOD : 1:16000 |
| Limitations | This NOTCH3 antibody is available for research use only. |



IHC testing of FFPE human hippocampus with NOTCH3 antibody at 4ug/ml. HIER: steamed with pH6 citrate buffer, HRP-staining.

Description

Additional name(s) for this target protein: CADASIL, CASIL

Application Notes

Optimal dilution of the NOTCH3 antibody should be determined by the researcher.

Immunogen

Amino acids QLGPQPEVTPKRQ were used as the immunogen for this NOTCH3 antibody.

Storage

Aliquot and store the NOTCH3 antibody at -20oC.