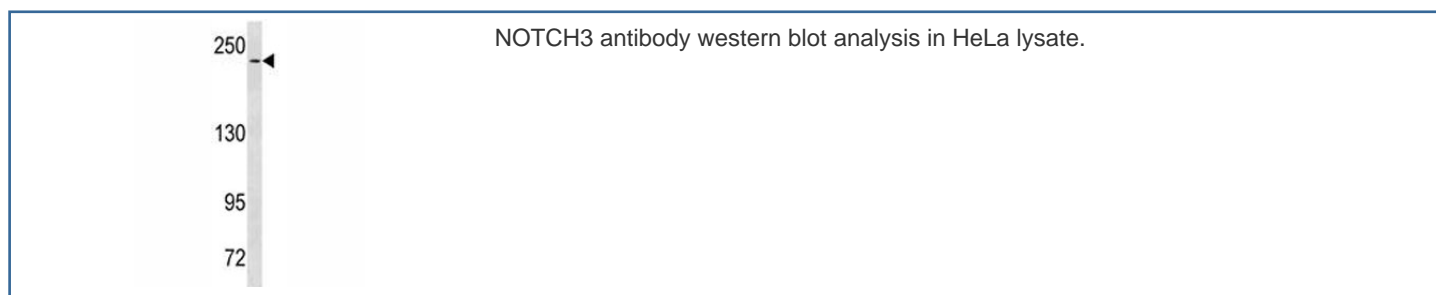


## NOTCH3 Antibody [clone 487CT6.9.2] (F40367)

Catalog No.	Formulation	Size
F40367-0.4ML	In 1X PBS, pH 7.4, with 0.09% sodium azide	0.4 ml
F40367-0.08ML	In 1X PBS, pH 7.4, with 0.09% sodium azide	0.08 ml

[Bulk quote request](#)

<b>Availability</b>	1-3 business days
<b>Species Reactivity</b>	Human
<b>Format</b>	Purified
<b>Host</b>	Mouse
<b>Clonality</b>	Monoclonal (mouse origin)
<b>Isotype</b>	Mouse IgG1
<b>Clone Name</b>	487CT6.9.2
<b>Purity</b>	Purified
<b>UniProt</b>	Q9UM47
<b>Applications</b>	Western Blot : 1:100-1:250
<b>Limitations</b>	This NOTCH3 antibody is available for research use only.



## Description

This gene encodes the third discovered human homologue of the *Drosophila melanogaster* type I membrane protein notch. In *Drosophila*, notch interaction with its cell-bound ligands (delta, serrate) establishes an intercellular signalling pathway that plays a key role in neural development. Homologues of the notch-ligands have also been identified in human, but precise interactions between these ligands and the human notch homologues remains to be determined. Mutations in NOTCH3 have been identified as the underlying cause of cerebral autosomal dominant arteriopathy with

subcortical infarcts and leukoencephalopathy (CADASIL). [provided by RefSeq].

## Application Notes

Titration of the NOTCH3 antibody may be required due to differences in protocols and secondary/substrate sensitivity.

## Immunogen

A portion of amino acids 2291-2321 from the human protein was used as the immunogen for this NOTCH3 antibody.

## Storage

Aliquot the NOTCH3 antibody and store frozen at -20oC or colder. Avoid repeated freeze-thaw cycles.