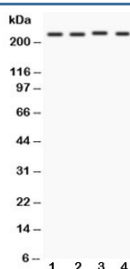


NOTCH1 Antibody (R30316)

Catalog No.	Formulation	Size
R30316	0.5mg/ml if reconstituted with 0.2ml sterile DI water	100 ug

Bulk quote request

Availability	1-3 business days
Species Reactivity	Human
Format	Antigen affinity purified
Clonality	Polyclonal (rabbit origin)
Isotype	Rabbit IgG
Purity	Antigen affinity
Buffer	Lyophilized from 1X PBS with 2.5% BSA and 0.025% sodium azide/thimerosal
UniProt	P46531
Applications	Western Blot : 0.5-1ug/ml
Limitations	This NOTCH1 antibody is available for research use only.



Western blot testing of NOTCH1 antibody and Lane 1: MCF-7; 2: HeLa; 3: Jurkat; 4: COLO320. Predicted molecular weight: ~ 270 kDa (full length), ~ 120 kDa (transmembrane fragment).

Description

Notch proteins are single-pass transmembrane receptors that regulate cell fate decisions during development. The Notch family includes 4 receptors, NOTCH1, NOTCH2, NOTCH3, and NOTCH4, whose ligands include JAG1, JAG2, DLL1), DLL3, and DLL4. Notch homolog 1, translocation-associated(NOTCH1), is a human gene encoding a single-pass transmembrane receptor. It functions as a receptor for membrane bound ligands, and may play multiple roles during development. NOTCH1 may normally coordinates the process of somitogenesis, and the activated Notch 1 and Notch 3 promote differentiation of progenitor cells into astroglia.

Application Notes

The stated application concentrations are suggested starting amounts. Titration of the NOTCH1 antibody may be required due to differences in protocols and secondary/substrate sensitivity.

Immunogen

An amino acid sequence from the middle region of human NOTCH1 (QHSYSSPVDNTPSHQLQVPE) was used as the immunogen for this NOTCH1 antibody.

Storage

After reconstitution, the NOTCH1 antibody can be stored for up to one month at 4oC. For long-term, aliquot and store at -20oC. Avoid repeated freezing and thawing.